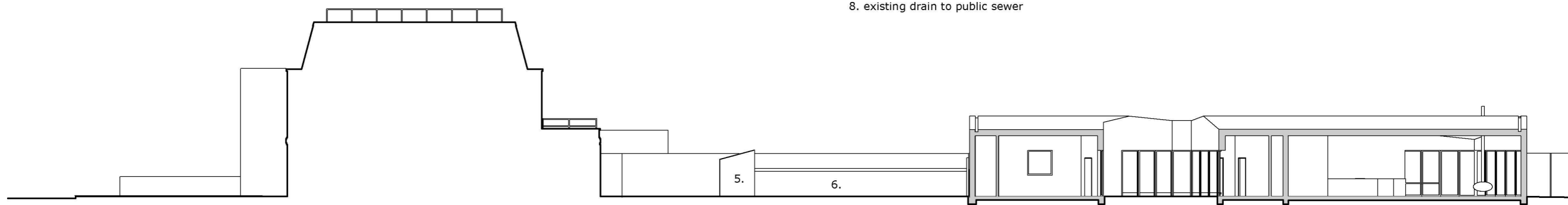
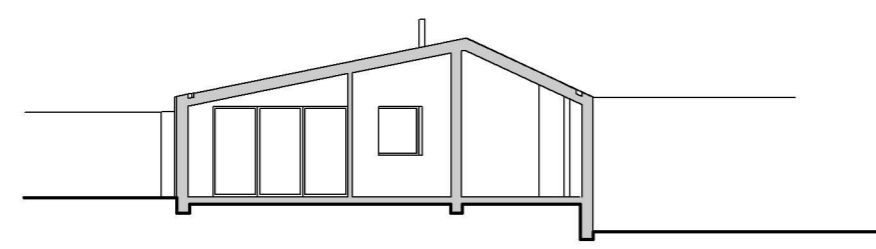


- 1. bi-fold doors
- 2. outdoor amenity space
- 3. car parking for two vehicles
- 4. bike store
- 5. refuse & recycling
- 6. vehicle access
- 7. car parking for no.83
- 8. existing drain to public sewer



section AA



section BB

Land to the rear of 83 Queen's Road
1023_07_P3: Floor Plan & Sections (proposed)
 26th October 2016
 scale on A3 1:200