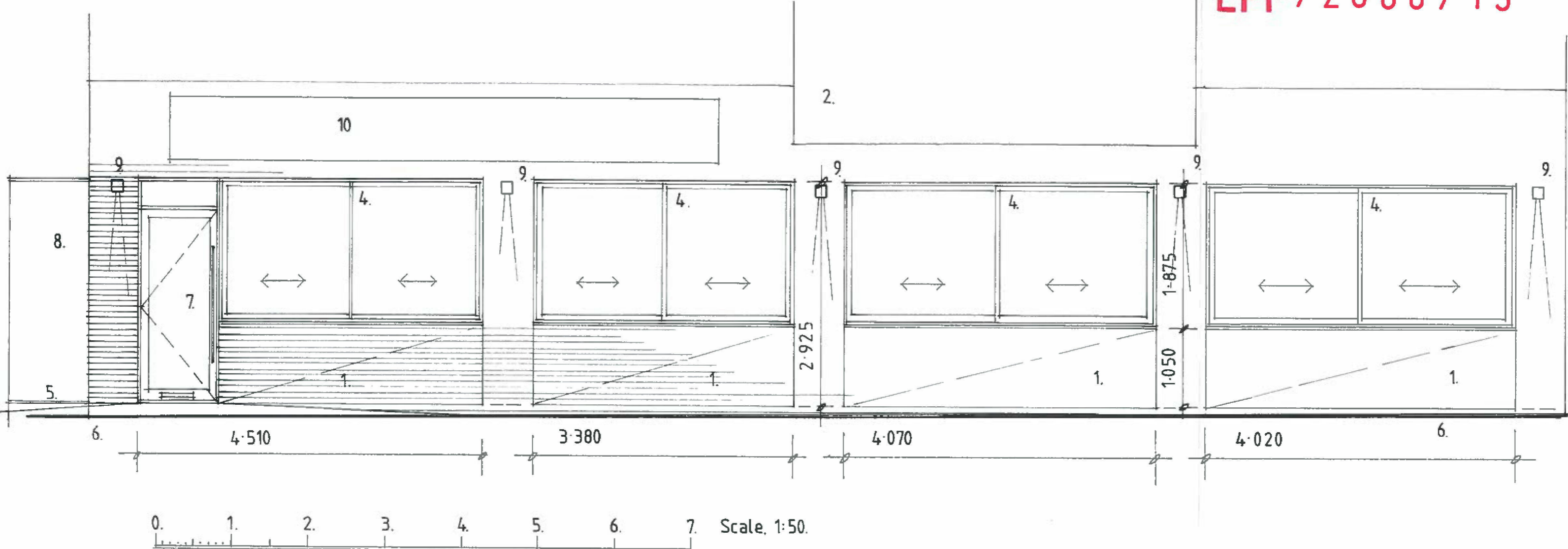


EPF / 2806 / 19



- 1 Matching Yellow stock facing brickwork to infill where larger shop window have been removed.
- 2 Black Cedral cladding board.
- 3 Grey powder coated aluminium windows/doors.
- 4 Bronze anodized aluminium shop sliding windows fitted into existing structural opening widths.
- 5 See drawing 2019/07/10 for details of revolving entrance doors and raised pavement works.
- 6 Existing ground/pavement level.
- 7 Bronze anodized aluminium disabled assess door with tarmac pavement level raised/ramped to provide level access.
- 8 Glass revolving entrance doors on side elevation.
- 9 Surface mounted down-lighters.
- 10 Location of illuminated sign subject of future planning application to EFDC.

**Proposed Restaurant. 26 High Street.**  
**Epping. Essex. CM16 4AU**  
**Part of Proposed North West Elevation.**  
1:50 scale. November. 2019 Drawing Number 2019/07/09  
**ROBERT FLETCHER**  
*Architectural Design and Project Management.*  
'HYTHE STUDIO'. 58 Ormonde Road. Hythe. Kent. CT21 6DW