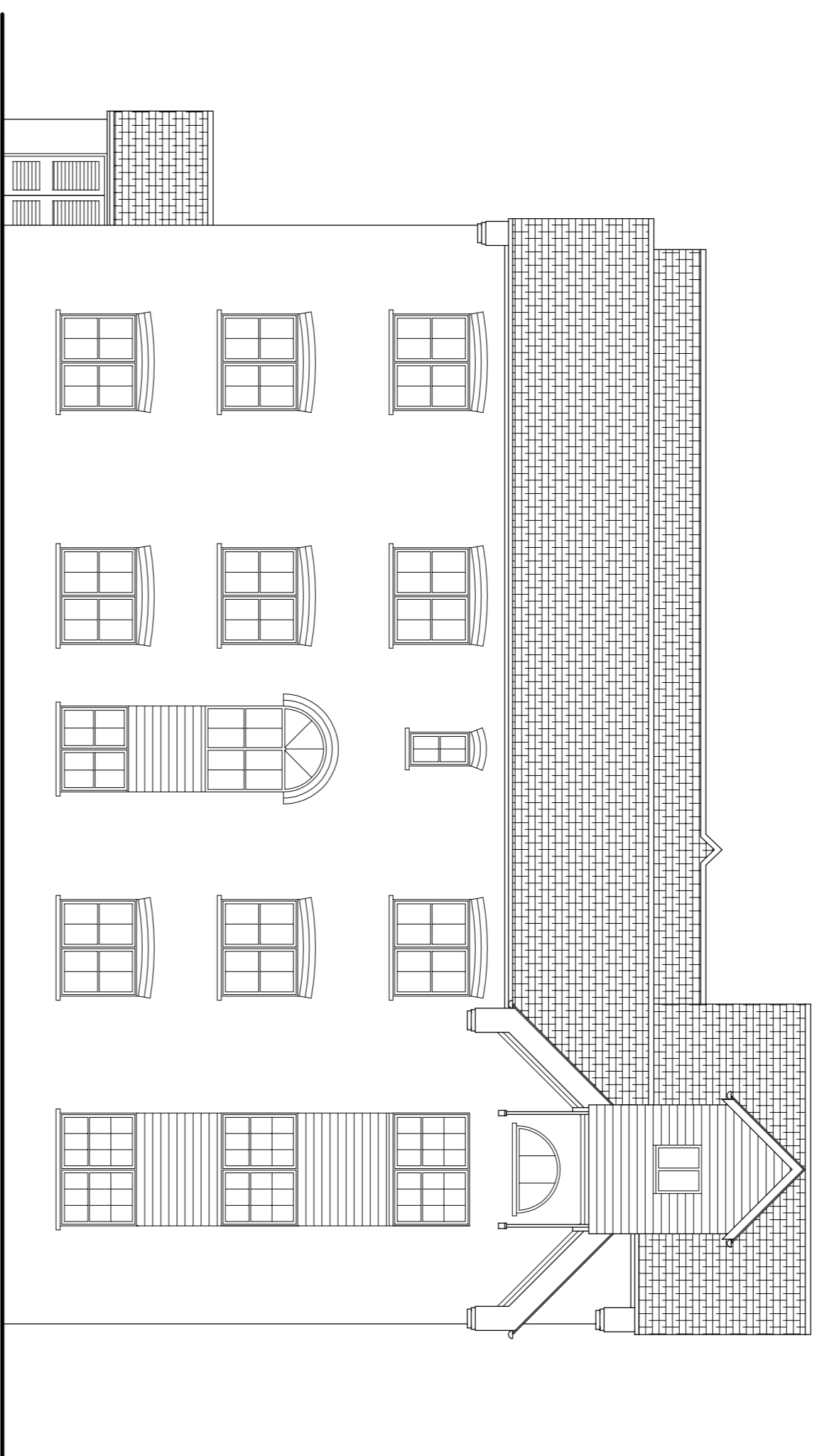
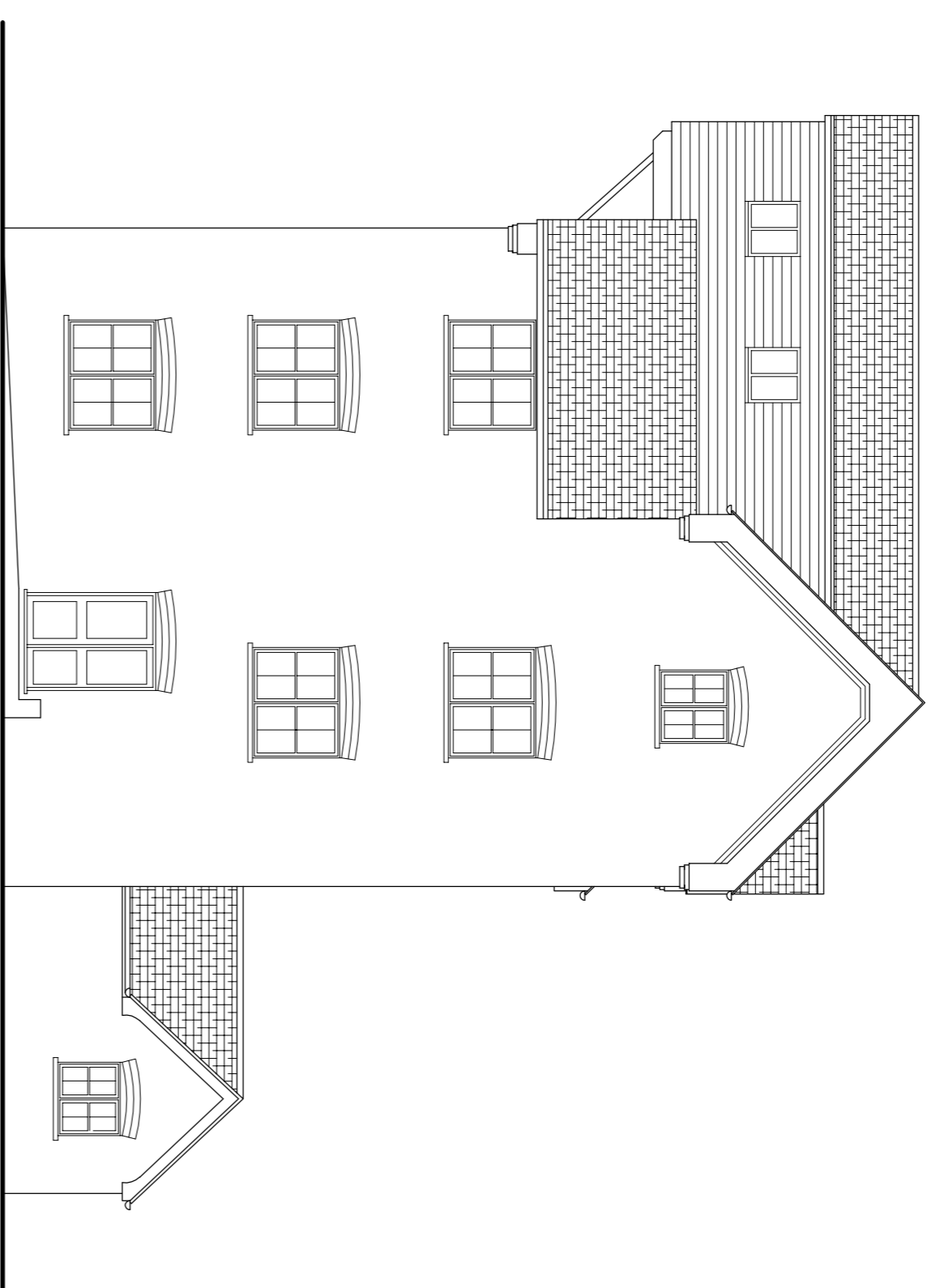


- GAINSBOROUGH HOUSE, THE MALTINGS - SAWBRIDGEWORTH -

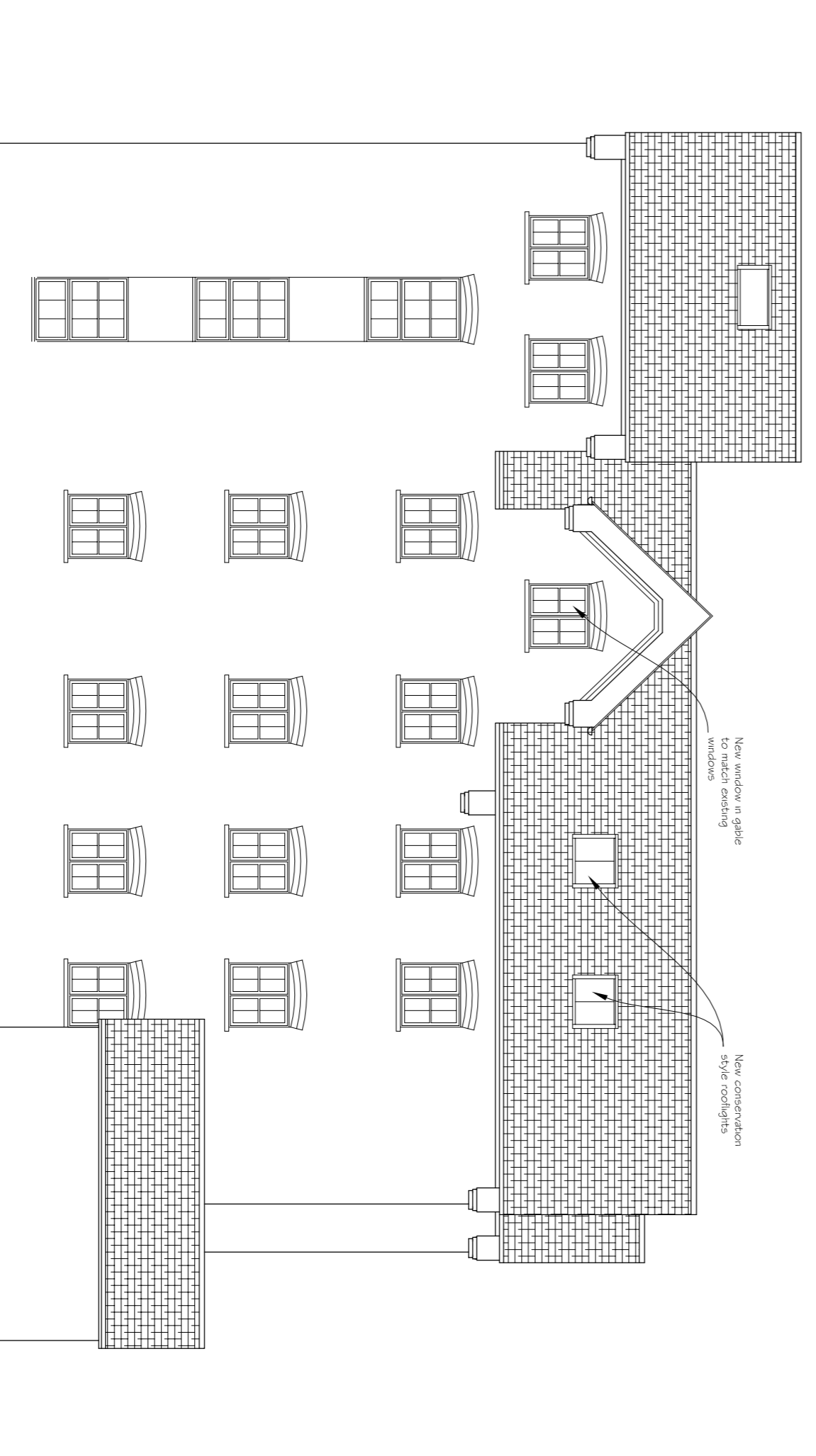
COPYRIGHT
Information contained on this drawing is confidential and intended for the sole use of the client. It is not to be copied, reproduced, or distributed in any form without the written authority of the architect. This drawing is copyright and may not be copied except within the agreed conditions of supply.



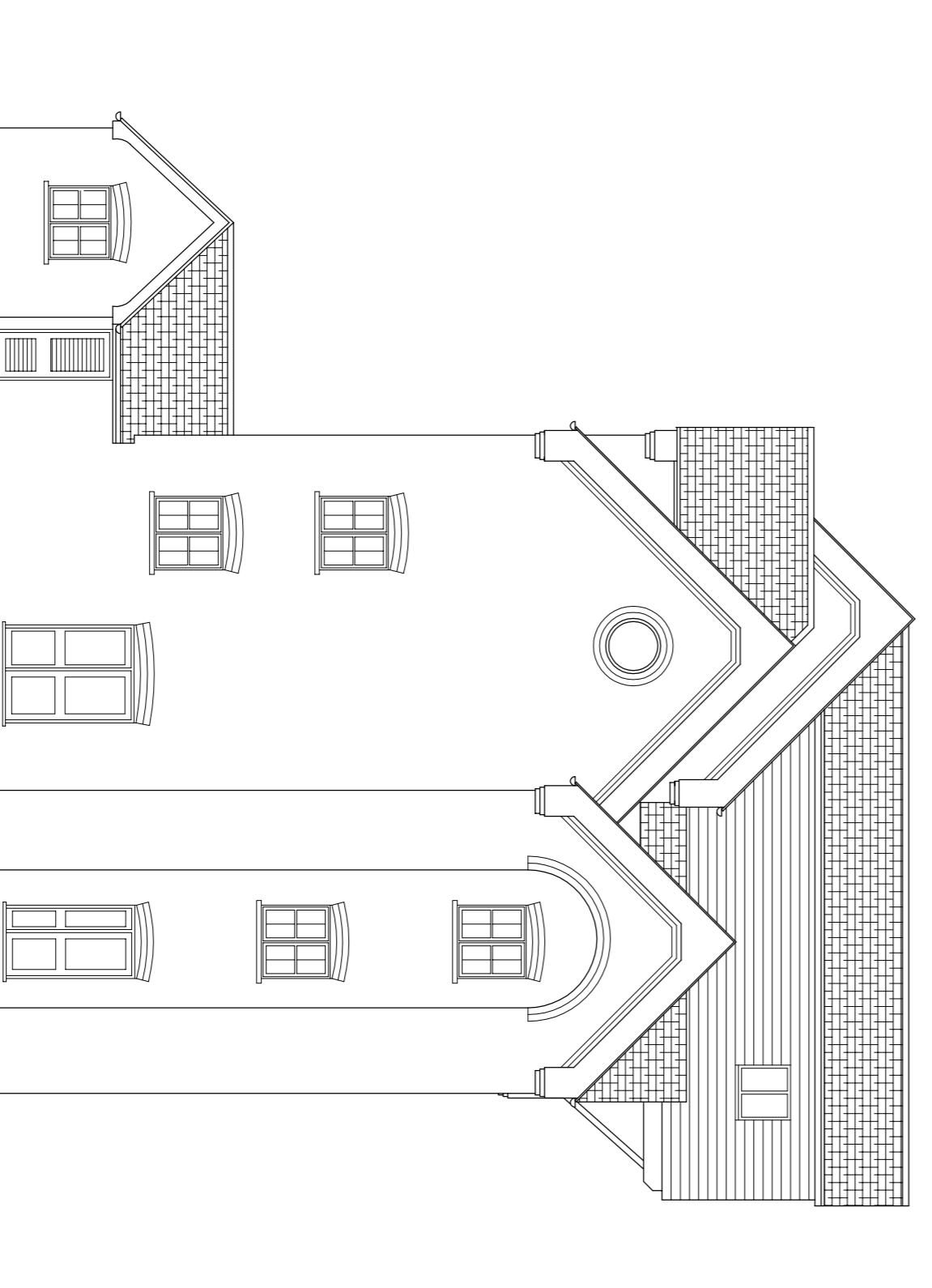
East Elevation (NO CHANGE FROM EXISTING)



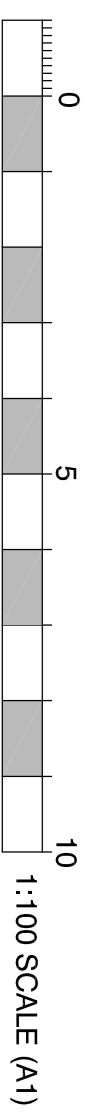
North Elevation (NO CHANGE FROM EXISTING)



West Elevation



South Elevation (NO CHANGE FROM EXISTING)



- PROPOSED ELEVATIONS - 1:100 -

PLANNING APPLICATION ISSUE
Rev A - October 2019 - Flat roof infill removed complete. Rooflights to east elevation roofslope deleted

PROPOSED DEVELOPMENT AT:-
GAINSBOROUGH HOUSE, THE
MALTINGS, SHERKING LOWER LANE,
SAWBRIDGEWORTH CM2 1 9FL

Proposed Elevations



Barn 1, Warren Farm, Green Tree, Muth-Hadfield, Herts SG10 6DP

scale - 1:100 (A1) | drawn - JIO | date - July 2019

Drq.No. **2714-13a**