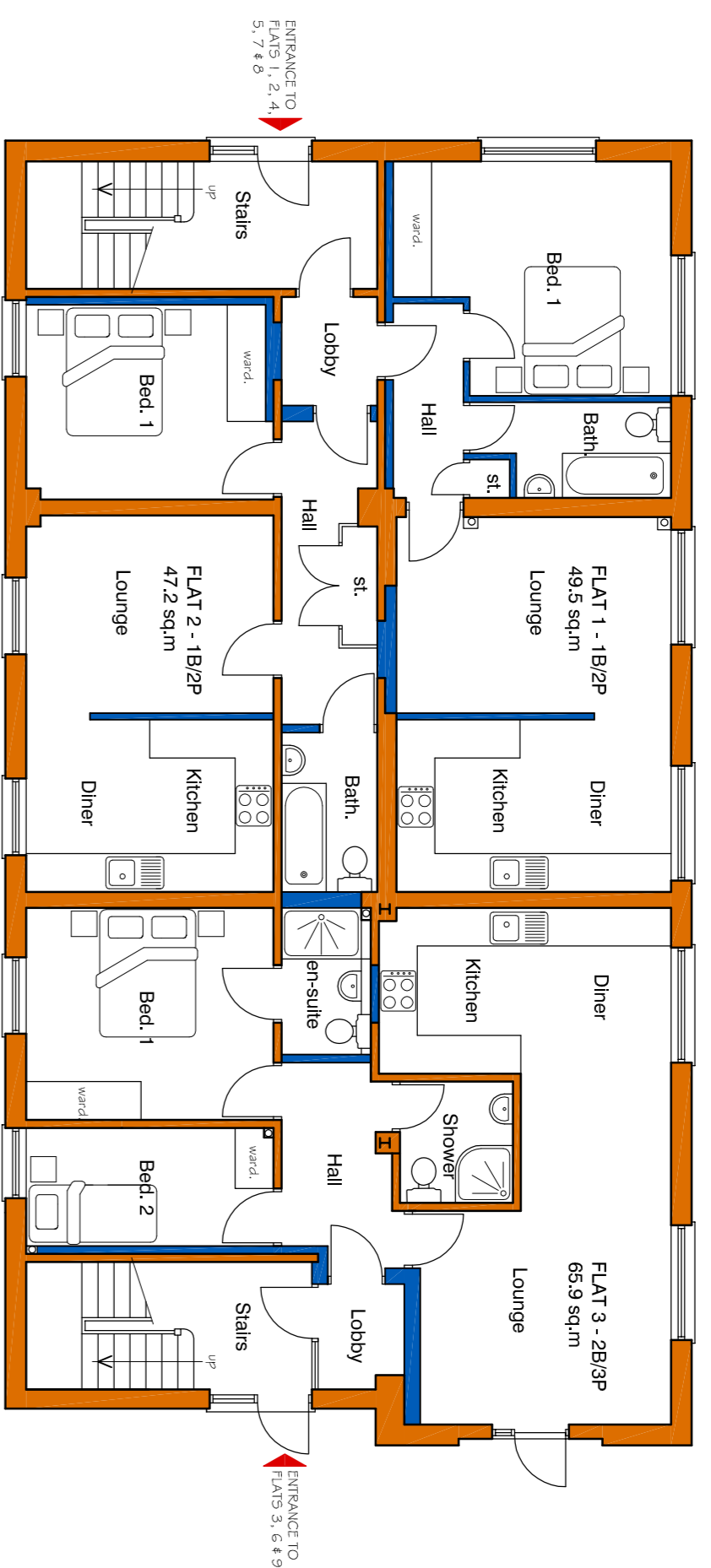


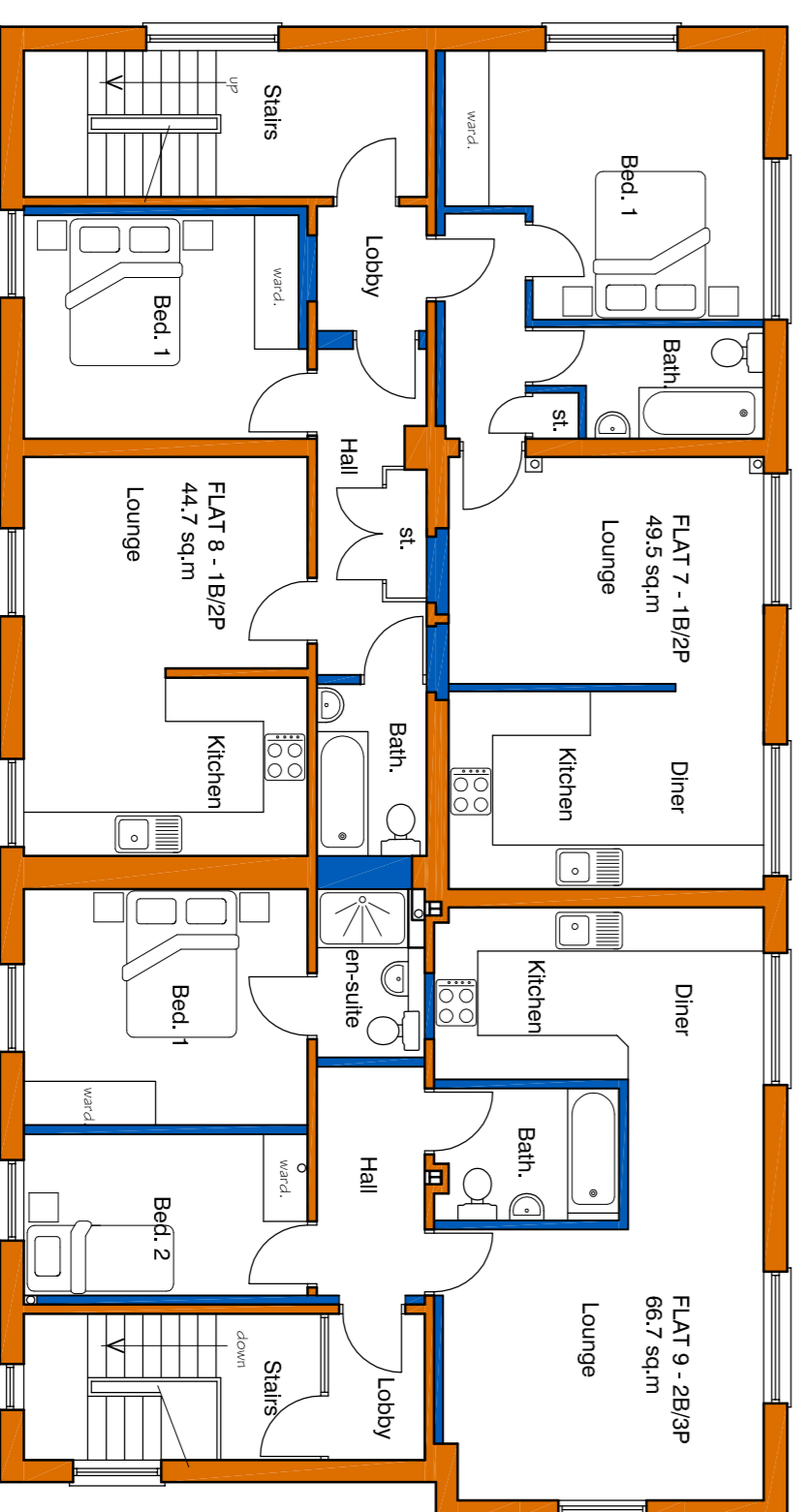
- GAINSBOROUGH HOUSE, THE MALTINGS - SAWBRIDGEWORTH -



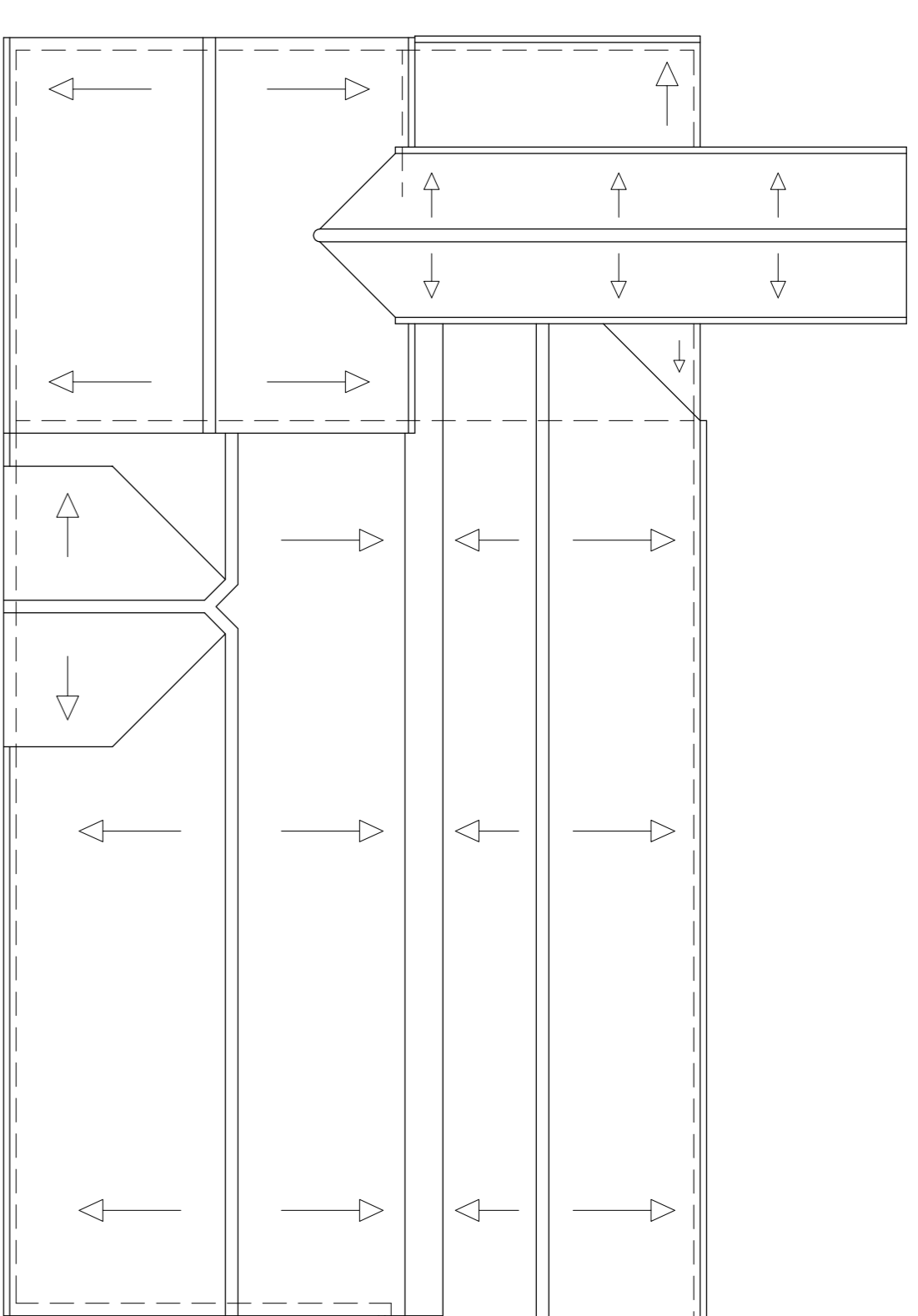
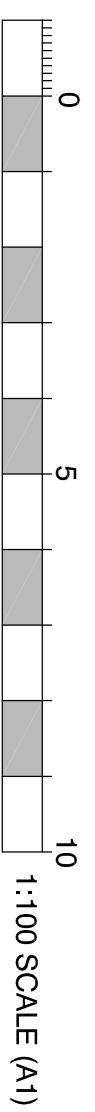
Ground Floor Plan



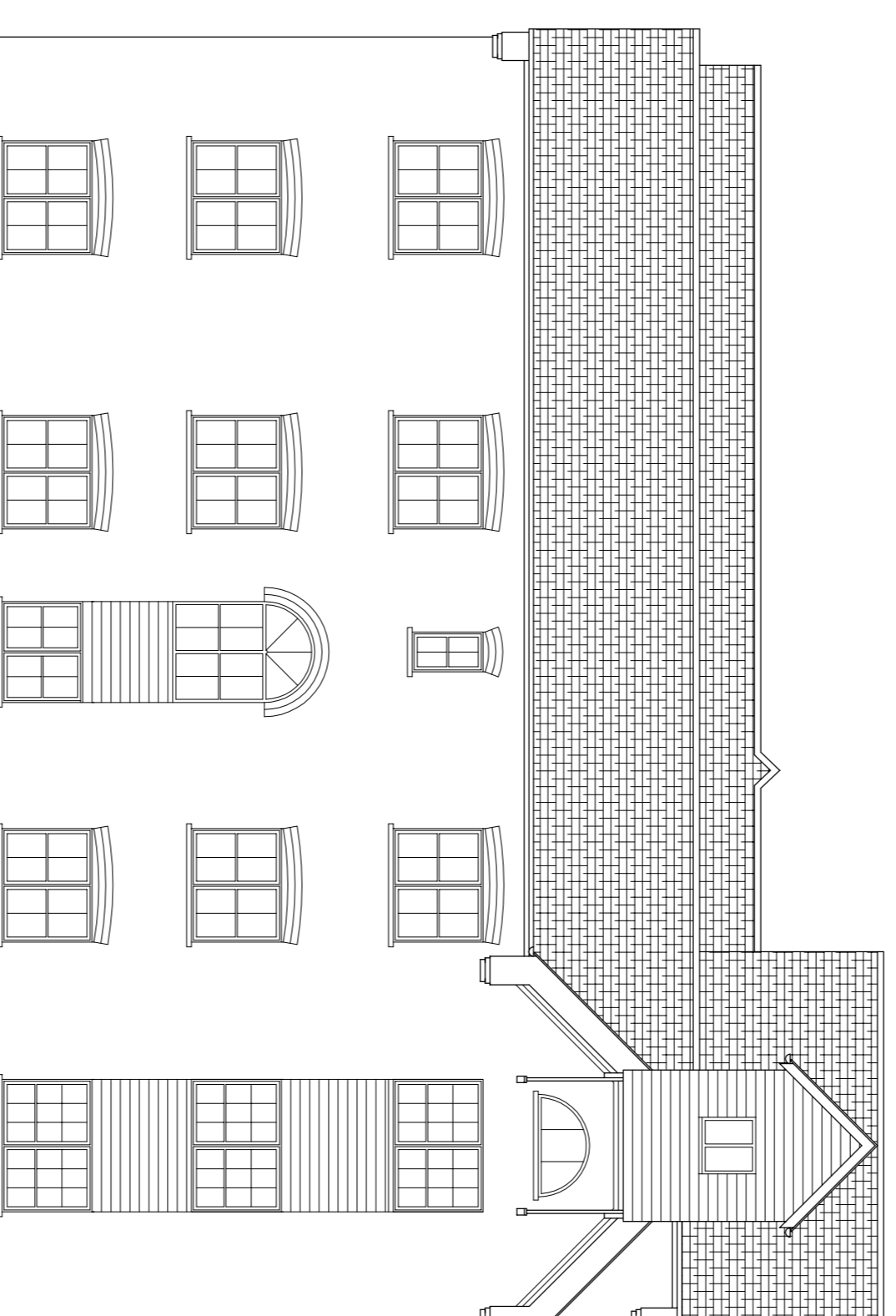
First Floor Plan



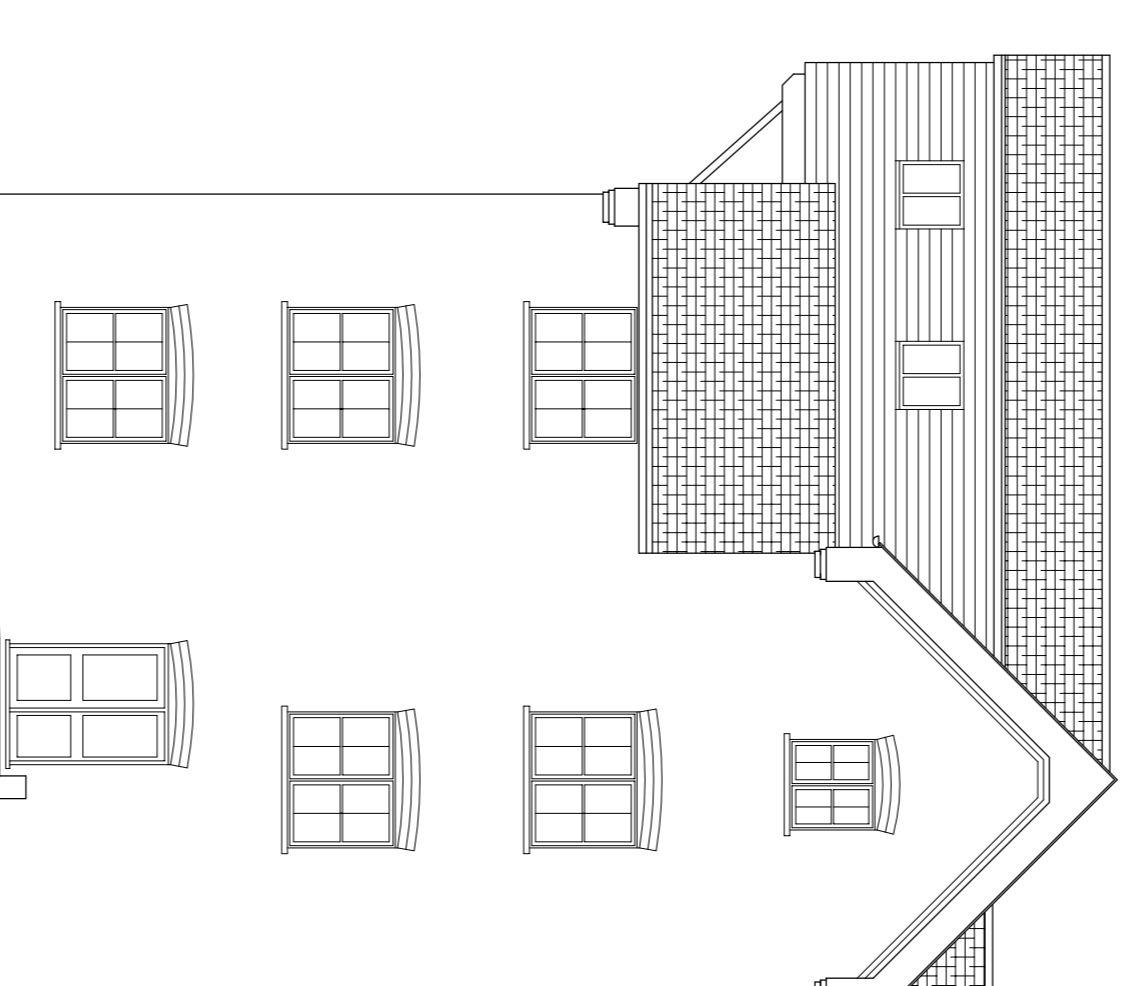
Second Floor Plan



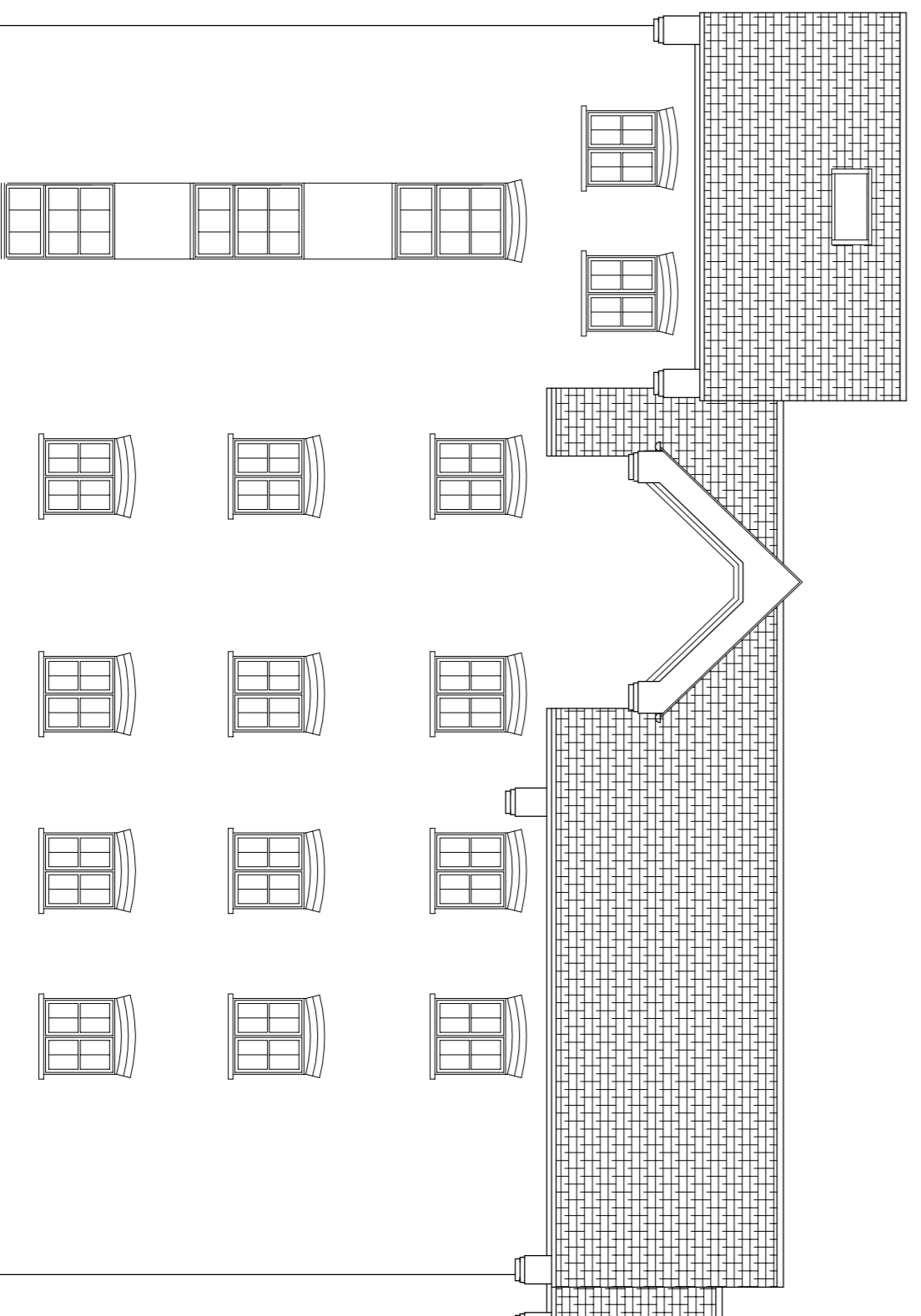
Roof Plan



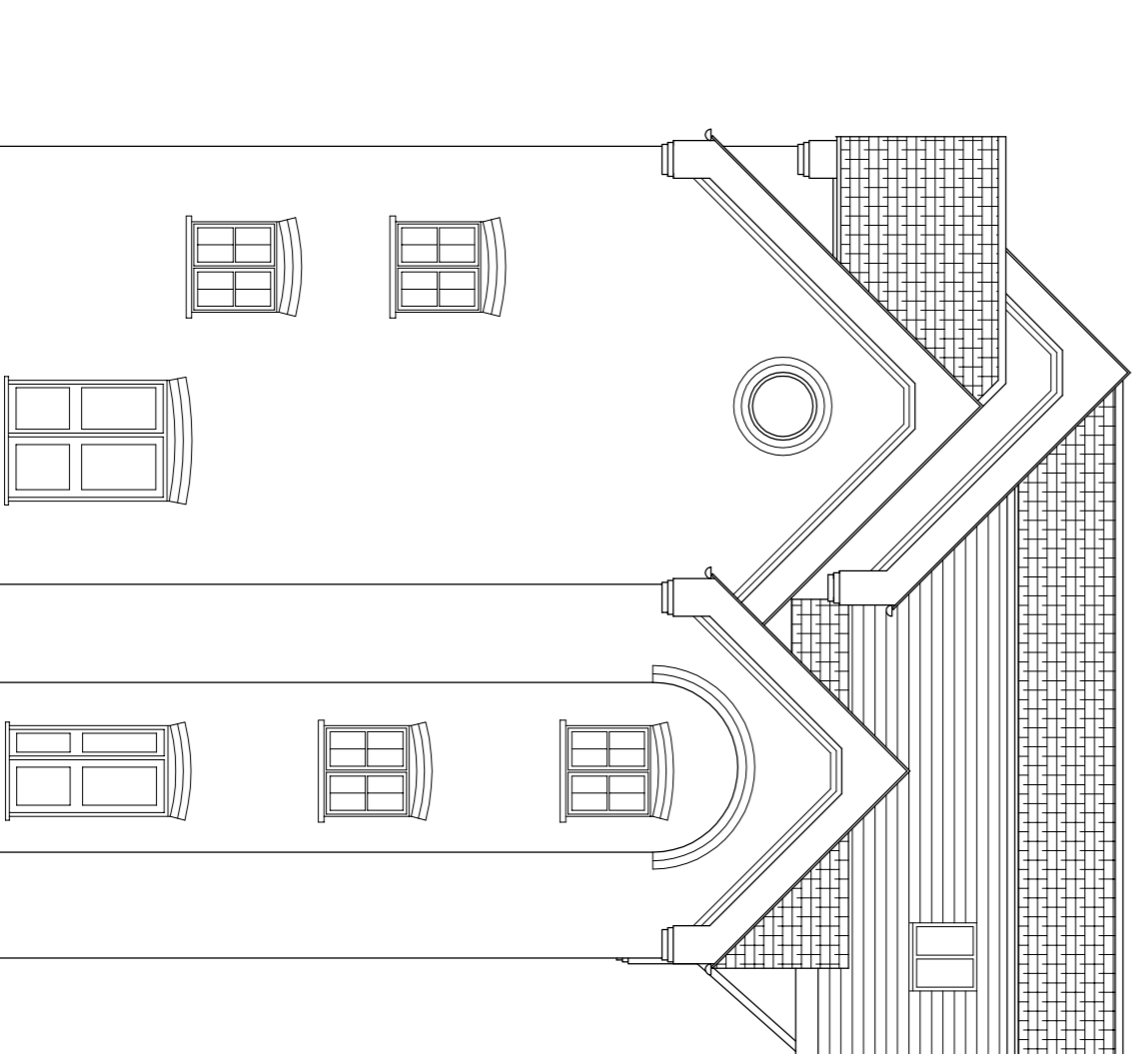
East Elevation



North Elevation



**West Elevation
(Note - No change to existing elevations)**



South Elevation

- PROPOSED FLOOR PLANS & ELEVATIONS - 1:100 -

COPYRIGHT
Information contained on this drawing is confidential and not to be distributed outside the project team without the written authority. This drawing is copyright and may not be copied except within the agreed conditions of supply.

- = EXISTING WALLS
- = PROPOSED WALLS

SCHEDULE OF ACCOMMODATION

5No. 2B/3P Flats
1No. 2B/4P Flat
8No. 1B/2P Flats

TOTAL - 9No. FLATS
Gross Internal Floor Area 484.4sq.m
(5,214sq.ft)

PLANNING APPLICATION ISSUE

Rev A - Oct 18 - General design amendments
Rev B - July 19 - extension element with 5 flats omitted complete. Elevations added to this sheet making DwgNo 27/14-20 now defunct

PROPOSED DEVELOPMENT AT:-
GAINSBOROUGH HOUSE, THE
MALTINGS, SHEERING LOWER LANE,
SAWBRIDGEWORTH CM21 9FL

Proposed Plans & Elevations



Barn 1, Warren Farm, Green Tree, Muth-Hedden, Herts SG10 6DP

scale - 1:100 (A1) | drawn - JIO | date - July 2018

Dwg.No. 2714-4B