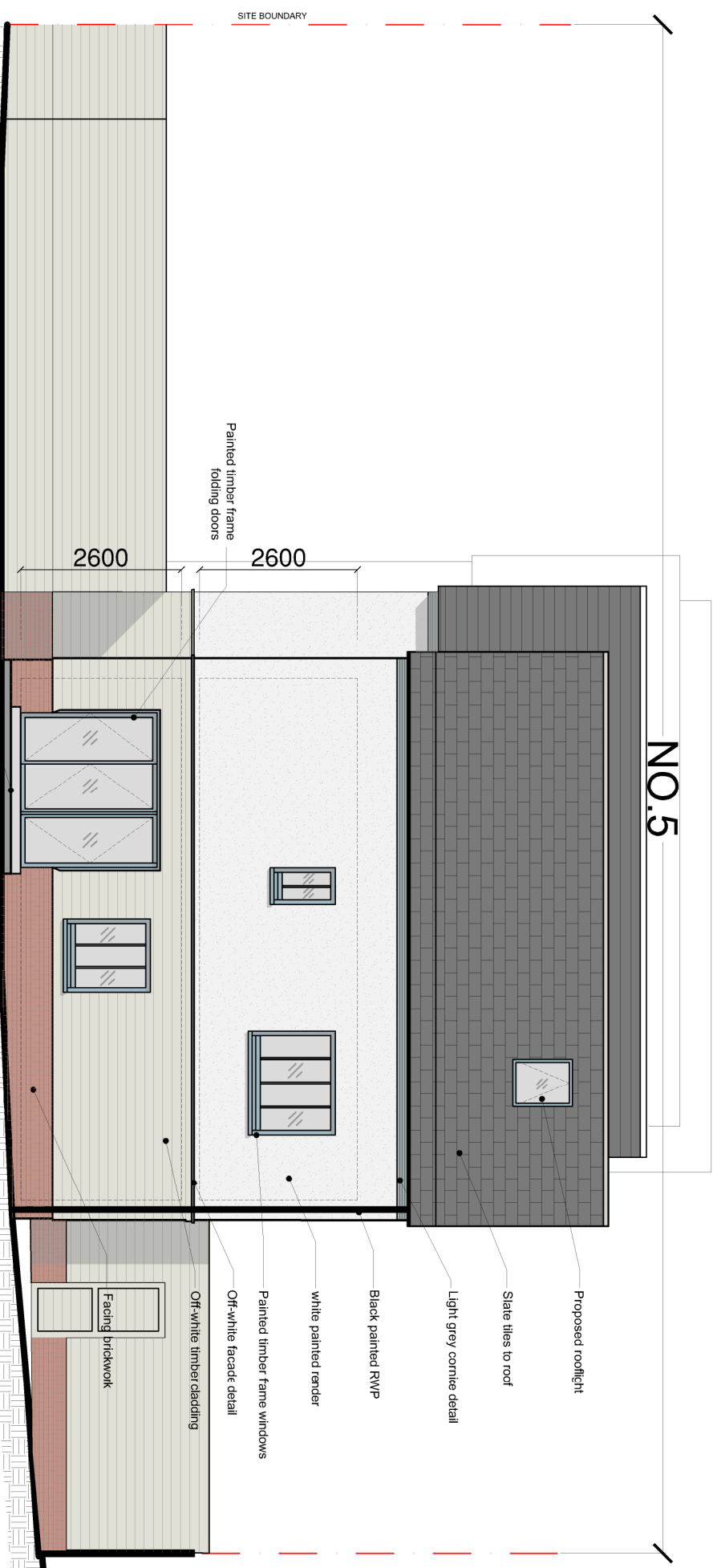
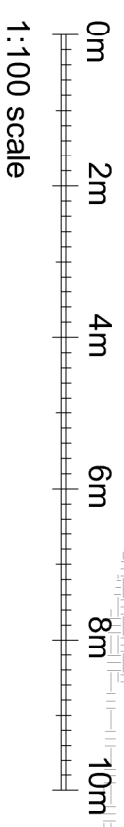




Proposed Front Elevation (2-5)



Proposed Side Elevation (2-5 - South)



ALL DIMENSIONS APPROXIMATE

FOR PLANNING

1 A | 260716 | Plot 5 Second floor adjusted

BB PARTNERSHIP LTD
 CHARTERED ARCHITECTS
 THE TRAVELER, 17 REMINGTON STREET, LONDON N1 8DH
 TEL . 020 7336 8555 FAX . 020 7336 8777
 e-mail . architect@bbpartnership.co.uk

project	Travelyan House, Goldings Hill			date	scale	drawing	drawn by
	Loughton, IG10 2SP						
drawing	Proposed Elevations			drwg. no	rev	check all dimensions on site	©
	Plots 2 - 5						

© 2010 BB PARTNERSHIP LIMITED
 ALL RIGHTS RESERVED