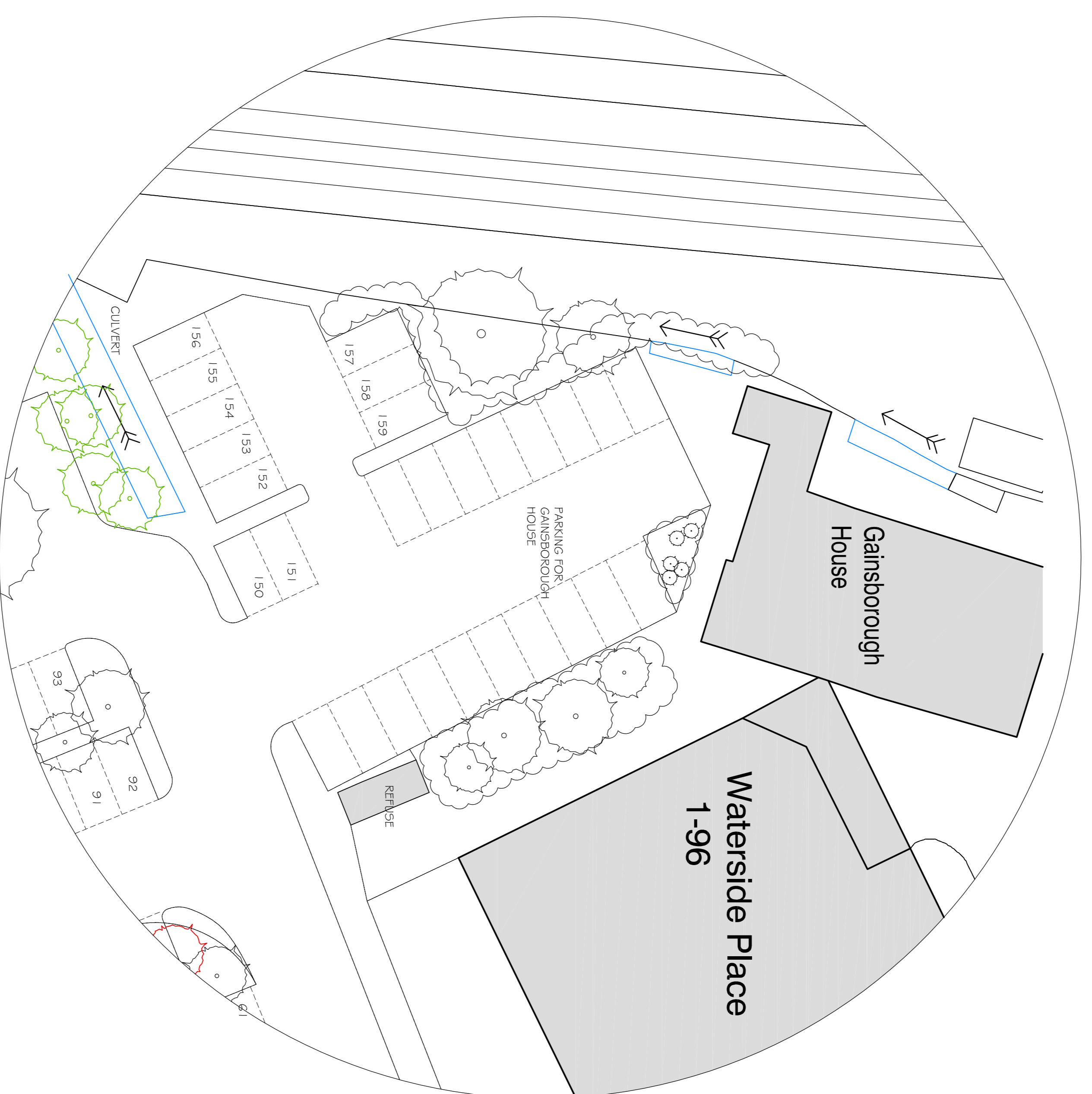
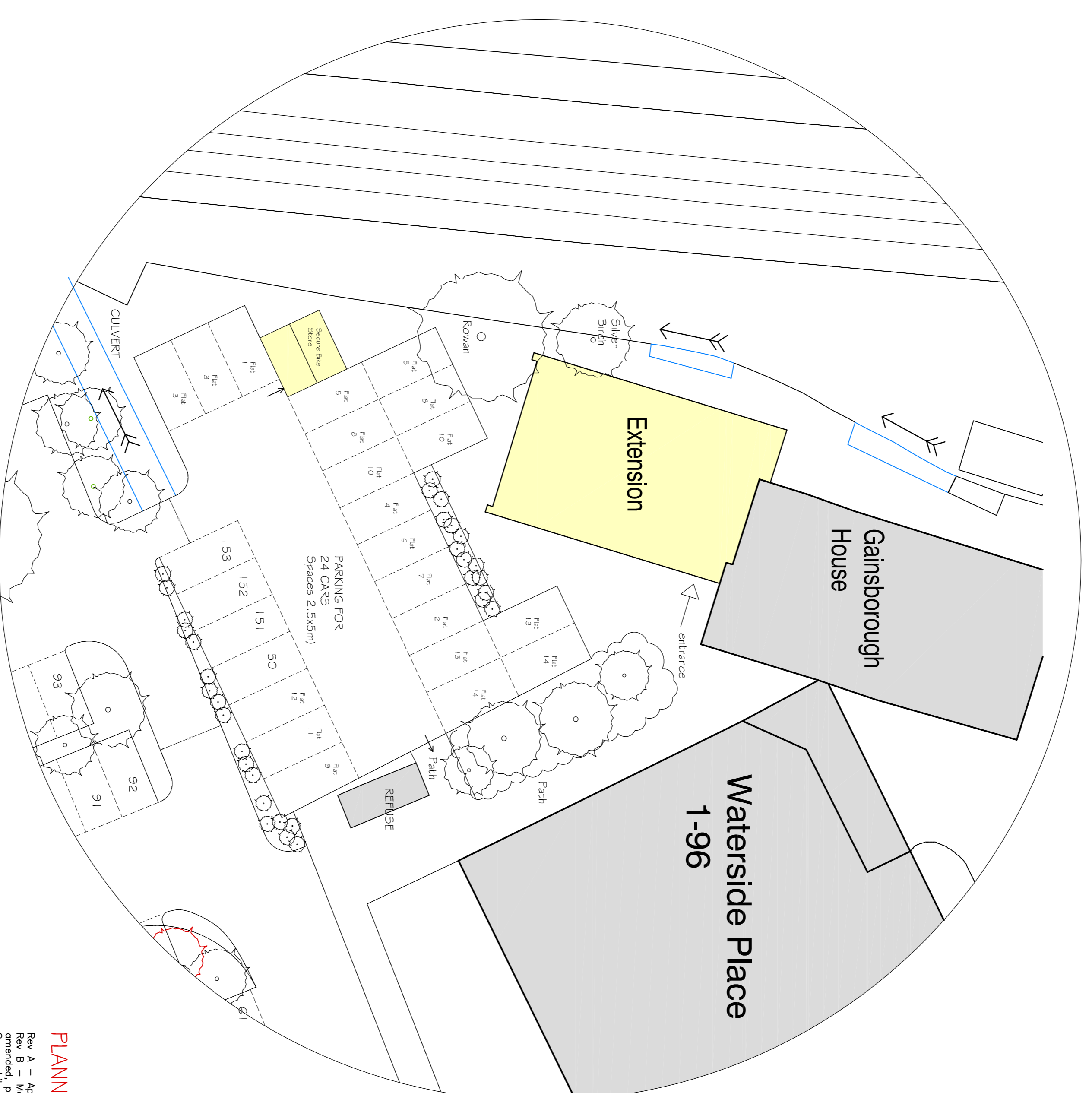
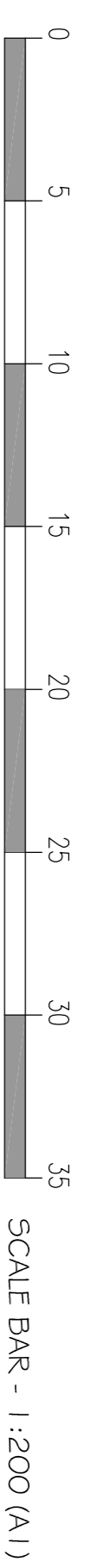


- GAINSBOROUGH HOUSE, THE MALTINGS - SAWBRIDGEWORTH -

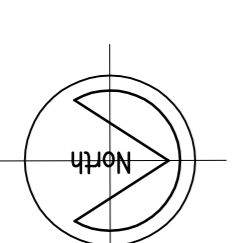
COPYRIGHT
Information contained on this drawing is confidential and intended solely for the use of the individual or entity to whom it is issued. If you have received this drawing by mistake, please notify the project manager immediately. This drawing is copyright and may not be copied except within the agreed conditions of supply.



Existing



Proposed



PLANNING APPLICATION ISSUE
Rev. A - April 2019 - title panel amended.
Rev. B - May 2019 - Proposed parking layout amended, parking spaces increased in size.
Secure bike store added

PROPOSED DEVELOPMENT AT:-
GAINSBOROUGH HOUSE, THE
MALTINGS, SHERKING LOWER LANE,
SAWBRIDGEWORTH CM2 1 9FL

Existing & proposed parking layout - Area 1



Barn 1, Warren Farm, Green Tree, Much Hadham, Herts SG10 6DP

scale- 1:200 (A1) | drawn- JIO | date- Dec 2018

Drwg.No. **2714-6b**

EXISTING & PROPOSED PARKING LAYOUT - AREA 1 - 1:200