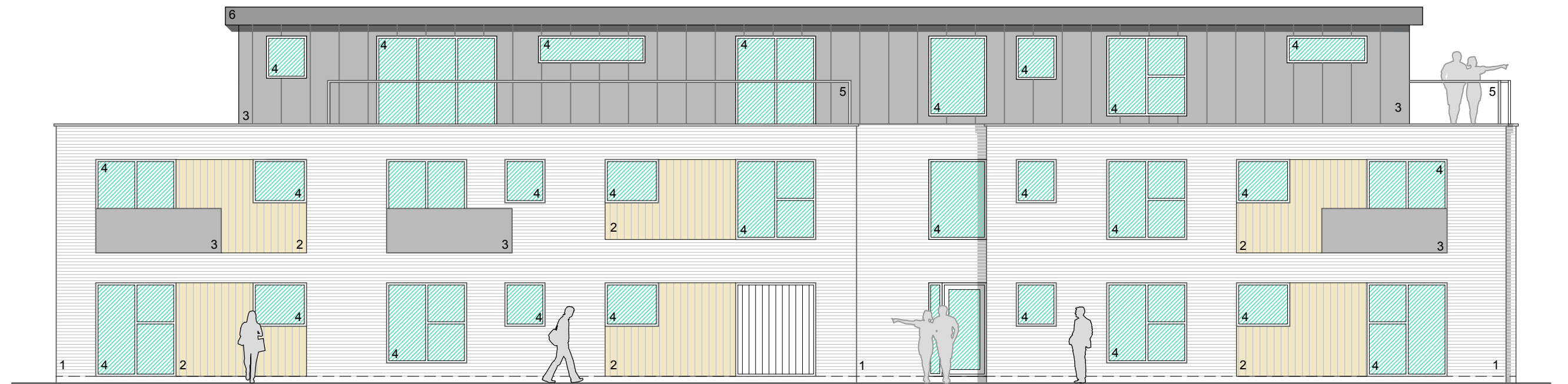




FRONT ELEVATION - NORTH FACING

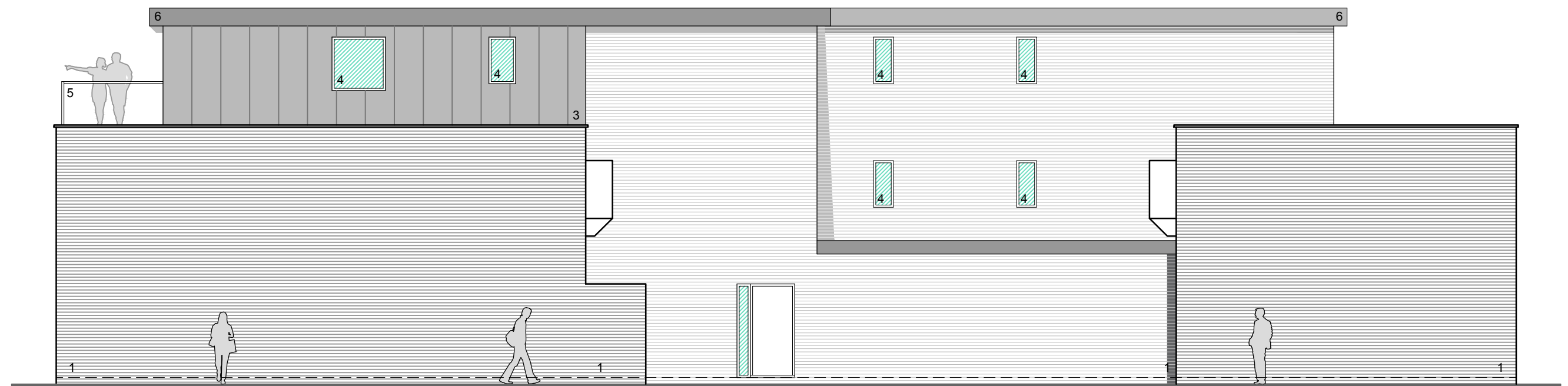
- KEY
1. Brickwork
 2. Timber Boarding
 3. Zinc Cladding panel
 4. Grey windows
 5. Glass Balustrade
 6. Grey Aluminium Fascia
 7. Glazed Juliet Style Balcony



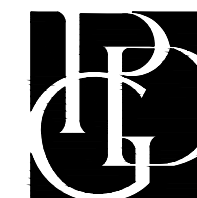
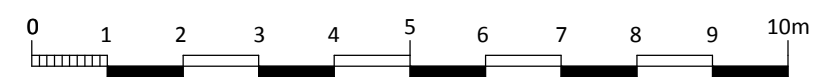
SIDE ELEVATION - EAST FACING



REAR ELEVATION - SOUTH FACING



SIDE ELEVATION - WEST FACING



PROPOSED RESIDENTIAL DEVELOPMENT
LAND AT 113 CHURCH HILL, LOUGHTON
PROPOSED ELEVATIONS

Scale: 1:100@A2
Drawn: KW

Date: Feb 2018
Dwg No: 17068/PL05

PDG ARCHITECTS LTD
Toll Bar House,
Shrewsbury Avenue,
Peterborough, PE2 7BX
T: 01733 371000
E: design@pdgarchitects.co.uk
W: www.pdgarchitects.co.uk