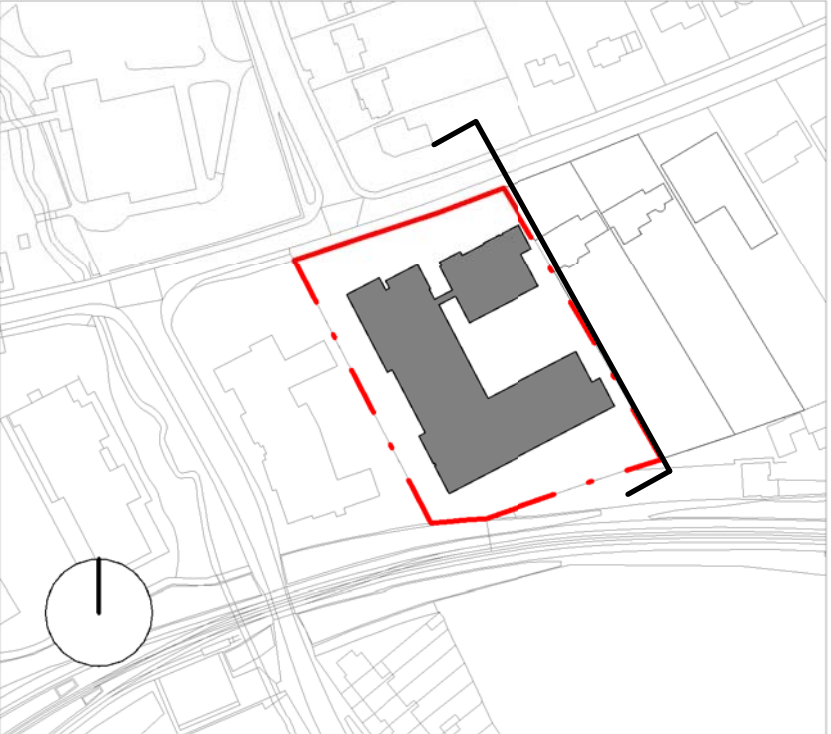
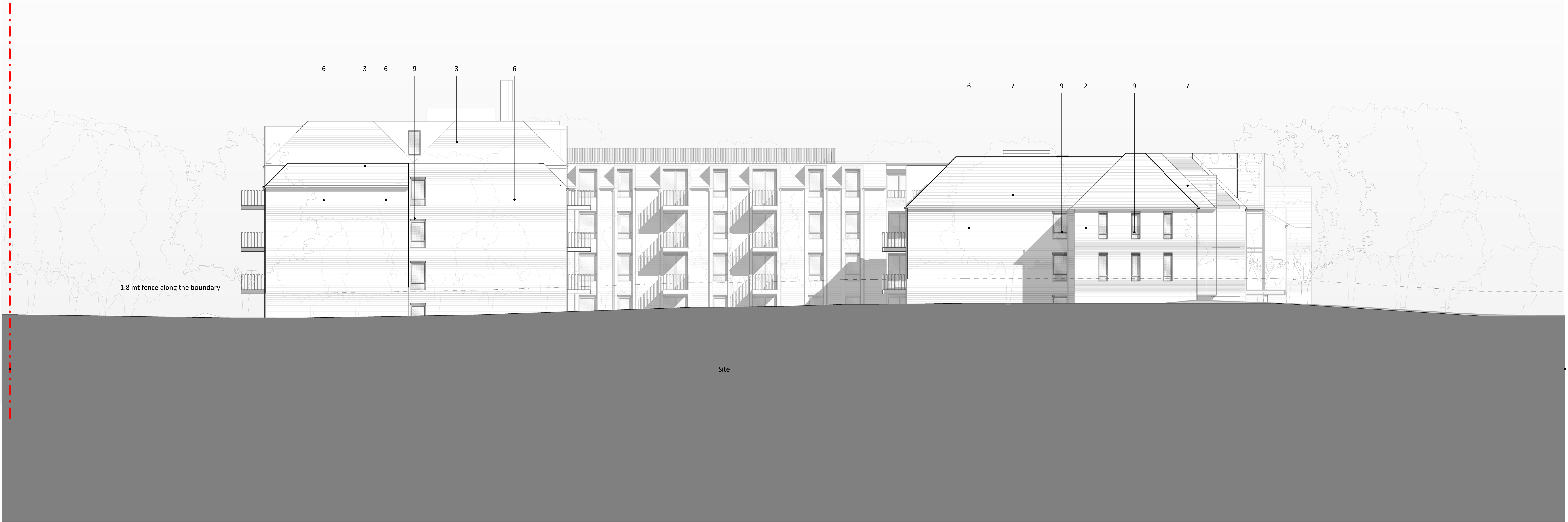


Key Plan



Materials Key

- 1 - White brick pattern with white mortar
- 2 - Red facing brickwork
- 3 - Grey tile roof
- 4 - Dark wood detailing
- 5 - Red facing brickwork with feature coursing
- 6 - Pale buff facing brickwork
- 7 - Red tiled roof
- 8 - Feature tile-hung cladding with quilted pattern
- 9 - Dark grey framing to windows
- 10 - Dark grey metal surround to dormers
- 11 - Dark grey metal railings
- 12 - Dark grey rainwater goods



1 Proposed East Elevation

1 : 100

NOTES			
CONSULTANTS			
- Refer to highway consultant's drawings for details			
- Refer to landscape consultant's drawings for details			
- Landscaping layout is indicative only			
AREAS			
- Refer to area schedule			
© Copyright Reserved. ColladoCollins Partners LLP			

Rev.	Notes	Date	By	Auth.
P.A.	Issued For Planning	08/06/2017	DM	VP
P.B.	Set-backs added on eastern side	31/10/2017	DM	DM
P.C.	Revision issued for Planning	22/11/2017	DM	DM
P.D.	Issued for planning	16/03/2018	DM	DM
P.E.	Post-planning refusal amendments	25/05/2018	DM	DM
P.F.	Issued for planning	10/07/2018	MS	DM
P.G.	Scheme revised for planning	16/10/2018	MS	DM



VISUAL SCALE 1:100 @ A0

Application Boundary

ColladoCollinsArchitects

17-19 Foley Street, London W1P 6EW
T 020 7580 3490 F 020 7580 2917
info@colladocollins.com www.colladocollins.com

Date: 17/07/17
Drawn by: VP
Checked by: DM
Scale @ A0: As indicated
Scale @ A2:

Elysian
Alderton Hill, Loughton
East Elevation as proposed

PLANNING
16074

P2-102

PG
Revised