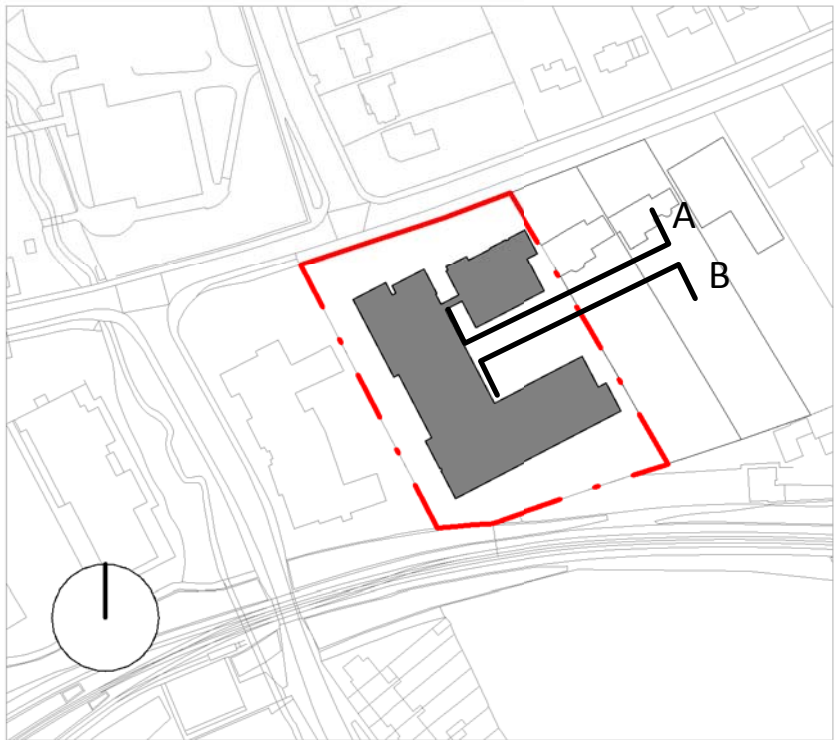
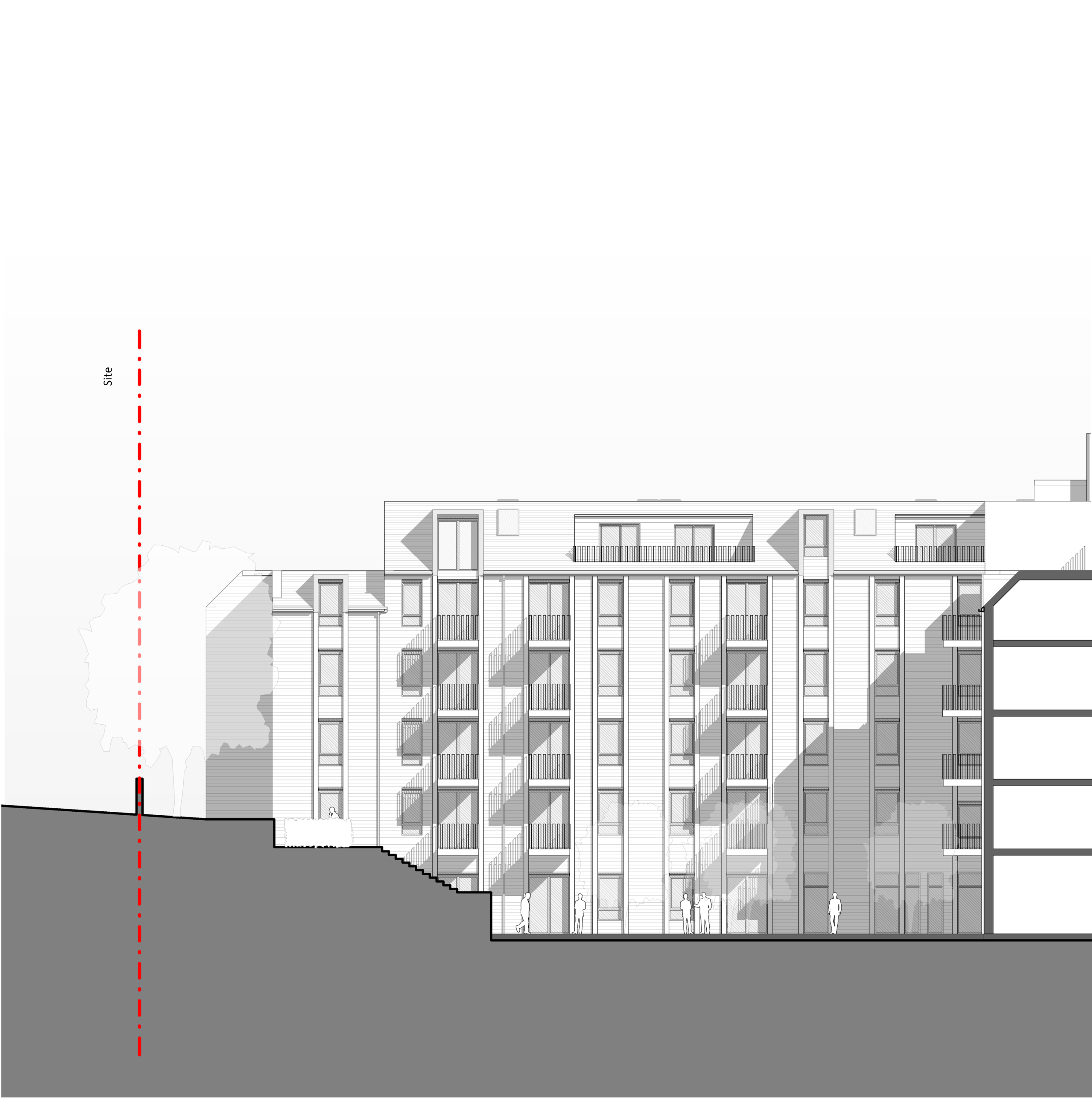


Key Plan



1 East-West section as proposed -looking North AA
1 : 100



3 East-West section as proposed -looking South BB
1 : 100

Rev.	Notes	Date	By	Auth.
P.A.	Issued For Planning	08/06/2017	DH	VP
P.B.	Set-backs added on eastern side	31/10/2017	DH	DH
P.C.	Revision issued for Planning	22/11/2017	DH	DH
P.D.	Issued for planning	16/03/2018	DH	DH
P.E.	Issued for planning	10/07/2018	SM	DH
P.F.	Scheme revised for planning	16/03/2018	MS	DH
P.G.	Scheme updated to reflect QSP comments	21/11/2018	DH	DH

NOTES

CONSULTANTS

- Refer to highway consultant's drawings for details
- Refer to landscape consultant's drawings for details
- Landscaping layout is indicative only

AREAS

- Refer to area schedule

© Copyright Reserved. ColladoCollins Partners LLP

0m 2m 4m 6m 8m 10m
VISUAL SCALE 1:100 @ A0

Application Boundary

ColladoCollinsArchitects

17-19 Foley Street, London W1P 6BN
T: 020 7580 3490
F: 020 7580 2917
info@colladocollins.com
www.colladocollins.com

Date: 17/07/17
Drawn by: VP
Checked by: DH
Scale @ A0: As indicated
Scale @ A2: 1 : 200

Elysian
Alderton Hill, Loughton
Courtyard Elevations/Sections as
proposed
PLANNING
16074
PG
160001
P3-101