
From: Sukhdeep Jhooti <sjhooti@eppingforestdc.gov.uk>
Sent: 30 January 2020 17:43
To: App Comment
Subject: FW: Trevelyan Gardens Lighting
Attachments: 14565-1-D Layout [Braemar] Report[1][2].pdf; 14565-1-D Layout [Braemar] Layout[1][3].pdf; Guidance Notes Light Pollution 2011.pdf

From: Michael Richardson
Sent: 13 November 2019 15:17
To: Sukhdeep Jhooti
Subject: FW: Trevelyan Gardens Lighting

Hi Sukhdeep

Further to my enquiries regarding the lighting at Trevelyan House (EPF/1317/19) I've been in discussions with the lighting consultant (see below email chain) and the information provided would indicate that the proposed lighting design is not going to significantly impact the nearby residents.

As such, I have no objection to the application, and would suggest a condition that the lighting shall be installed to the requirements of the planning application (I'll let you write the condition in planning speak!)

Regards

Mike

Michael Richardson
Senior Environmental Enforcement Officer
Community Resilience Team
Communities & Partnerships Directorate
Epping Forest District Council
High Street
Epping
Essex
CM16 4BZ

(01992) 564422
mrichardson@eppingforestdc.gov.uk



Are you doing the right thing with your waste? Find out or you could end up with a criminal record.
www.recycleforsex.com/crimenottocare



Handing your waste to somebody else? Click here to view our [Crime Not to Care](#) films.

Check, consider, record to protect yourself and reduce fly-tipping by rogue traders.

From: Emilio Hernandez [mailto:emilio@nultylighting.co.uk]
Sent: 07 November 2019 14:25
To: Michael Richardson <MRichardson@eppingforestdc.gov.uk>
Cc: t.mccaughan@bbpartnership.co.uk; pflanagan@capelcs.com
Subject: Re: Trevelyan Gardens Lighting

CAUTION: This Message originated outside of Epping Forest District Council. Do not click links or open attachments unless you recognise the sender and know the contents is safe.

Hi Michael

Thanks for your time just now.

To summarise our conversation our recommendation was that the DW Windsor scheme is well considered. We requested that they provide calculation surfaces to replicate the elevation for the properties along Monkchester Close (shown as Vertical Grid 1 & 2 on the last two pages of 14565-1-Layout Report (in red)).

This should hopefully satisfy your request for a more detailed lighting map and demonstrates the values of lighting on the existing buildings' elevation which are between 0-1 Lux and what we would consider within the light pollution allowance in the ILP best practice Light Pollution Guidance Notes for an 'E1' environmental zone (see pages 4&5 of the attached ILP document for more information).

Best

Emilio Hernandez
Director

T | +44 (0)207 401 3635
M | +44 (0)7908 538 064
W | nultylighting.co.uk

From: Michael Richardson <MRichardson@eppingforestdc.gov.uk>
Date: Thursday, 7 November 2019 at 13:33
To: Emilio Hernandez <emilio@nultylighting.co.uk>
Cc: "t.mccaughan@bbpartnership.co.uk" <t.mccaughan@bbpartnership.co.uk>, "pflanagan@capelcs.com" <pflanagan@capelcs.com>
Subject: RE: Trevelyan Gardens Lighting

Hi Emilo

Thanks for calling, and explaining the lighting maps.

Looks like my concerns regarding the vertical spill and the impact that this could have on the residents are allayed. Can you confirm, however, if there is any issue with glare to the residents in Monkchester Close, which during our chat you indicated shouldn't be an issue.

FYI, I've checked the planning application, and it hasn't been granted yet, and it looks like the enquiry to you was to enable me to see a more detailed "light map", and in particular dealing with the vertical spill to the residents behind the development.

Regards

Mike

Michael Richardson
Senior Environmental Enforcement Officer
Community Resilience Team
Communities & Partnerships Directorate
Epping Forest District Council
High Street
Epping
Essex
CM16 4BZ

(01992) 564422
mrichardson@eppingforestdc.gov.uk



Are you doing the right thing with your waste? Find out or you could end up with a criminal record.
www.recycleforsexsex.com/crimenottocare



Handing your waste to somebody else? Click here to view our [Crime Not to Care](#) films.

Check, consider, record to protect yourself and reduce fly-tipping by rogue traders.

From: Emilio Hernandez [<mailto:emilio@nultylighting.co.uk>]
Sent: 01 November 2019 13:29
To: Michael Richardson <MRichardson@eppingforestdc.gov.uk>
Cc: t.mccaughan@bbpartnership.co.uk; pflanagan@capelcs.com
Subject: Trevelyan Gardens Lighting

CAUTION: This Message originated outside of Epping Forest District Council. Do not click links or open attachments unless you recognise the sender and know the contents is safe.

Hi Michael

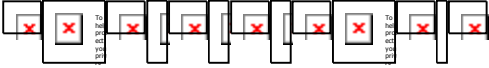
We've been approached by BBP and Capel regarding a light spill report for Trevelyan Gardens. I just wanted to have a discussion on the request for a 'light map' to understand exactly what is being requested before we undertake any work. The calculations provided by the manufacturer are already quite well considered and I wanted to try and see if this could be resolved without the need for a report.

If you have a moment to return my call I'd be happy to talk over the above and attached.

Best

Emilio Hernandez
Director

T | +44 (0)207 401 3635
M | +44 (0)7908 538 064
W | nultylighting.co.uk



DISCLAIMER

This email is for the use of the intended recipients only. Any opinion or advice it contains is that of the sender and does not bind the authority in any way. If you have received it in error, please notify the sender immediately and then delete the message. If you are not the intended recipient you must not use, disclose, copy or distribute this email. We have taken precautions to minimise the risk of transmitting software viruses, but we advise that you carry out your own virus checks on an attachment to this message. We cannot accept liability for any loss or damage caused by software viruses.

Internet email is not a secure communication medium, and we advise that you observe this lack of security when emailing us.

Epping Forest District Council
Postmaster@Eppingforestdc.gov.uk

DATE: 21 October 2019
DESIGNER: Lee Walker
PROJECT No: 14565-1-D [Braemer]
PROJECT NAME: Trevelyan Close, Loughton



Braemar luminaire, post top mounted, 16 x 4K LED array, C2 [REF A] or A1 [REF B] optic as per schedule. 350mA, 35lux photocell, RAL 9005 finish. 4M TLS Chester column, root mounted, finished black.

Luminaires are positioned where possible on building boundaries and away from property frontages so as to minimise light pollution into the houses. All luminaires, optics and locations are designed to comply with the ILP Guidance Notes for the Reduction of Obtrusive Light. Should further measures of light control be required, the luminaire selected is capable of having a rearwards Obtrusive Light Shield (OLS) fitted.

Levels on the road comply with P4 class from BS EN13201

Outdoor Lighting Report

PREPARED BY: Lee Walker

DW Windsor
Pindar Road
Hoddesdon
Hertfordshire
EN11 0DX

+44 [0] 1992 474600

Layout Report

General Data

Dimensions in Metres Angles in Degrees

Calculation Grids

ID	Grid Name	X	Y	X' Length	Y' Length	X' Spacing	Y' Spacing
1	Road	1236.19	-957.59	57.94	62.87	1.49	1.50
2	Cut-through	1256.73	-923.97	66.89	21.15	1.49	1.41
3	Isoline Grid	1166.40	-1013.58	159.00	142.50	1.50	1.50
4	Vertical Grid 1	1256.25	-889.01	34.25	6.00	1.49	1.50
5	Vertical Grid 2	1307.19	-920.39	22.78	6.00	1.42	1.50

Luminares

Luminaire A Data

Supplier	
Type	Bremer-16LED-4k- C2 350mA UMSUG 42 0 019 0000 100
Lamp(s)	16x 4K LED
Lamp Flux (klm)	2.19
File Name	Bremer-16LED-4k- C2 350mA UMSUG 42 0 019 0000 100.ies
Maintenance Factor	0.84
Imax70,80,90(cd/klm)	942.6, 49.4, 16.7
No. in Project	5

Luminaire B Data

Supplier	
Type	Bremer-16LED-4k-A1 350mA UMSUG 42 00 19 0000 100
Lamp(s)	16 x 4K LED
Lamp Flux (klm)	2.21
File Name	Bremer-16LED-4k-A1 350mA UMSUG 42 0 019 0000 100.ies
Maintenance Factor	0.84
Imax70,80,90(cd/klm)	814.9, 54.7, 7.4
No. in Project	1

Luminaire C Data

Supplier	
Type	Sephora Bulkhead -16LED-4k-300mA-Narrow -12W
Lamp(s)	16x4k LED
Lamp Flux (klm)	1.49
File Name	Sephora Bulkhead-16LED-4k-300mA-Narrow- 12W.ies
Maintenance Factor	0.84
Imax70,80,90(cd/klm)	125.1, 43.1, 3.6
No. in Project	1

Layout

ID	Type	X	Y	Height	Angle	Tilt	Cant	Out- reach	Target X	Target Y	Target Z
1	A	1230.93	-922.13	4.00	306.00	0.00	0.00	0.00			
2	A	1240.23	-940.35	4.00	45.00	0.00	0.00	0.00			
3	A	1256.81	-924.20	4.00	131.00	0.00	0.00	0.00			
4	A	1256.48	-904.19	4.00	221.00	0.00	0.00	0.00			
5	B	1299.06	-934.09	4.00	256.00	0.00	0.00	0.00			
6	C	1268.16	-915.37	2.00	221.00	0.00	0.00	0.00			

Layout Continued

ID	Type	X	Y	Height	Angle	Tilt	Cant	Out- reach	Target X	Target Y	Target Z
7	A	1249.04	-888.39	4.00	170.00	0.00	0.00	0.00			

Horizontal Illuminance (lux)

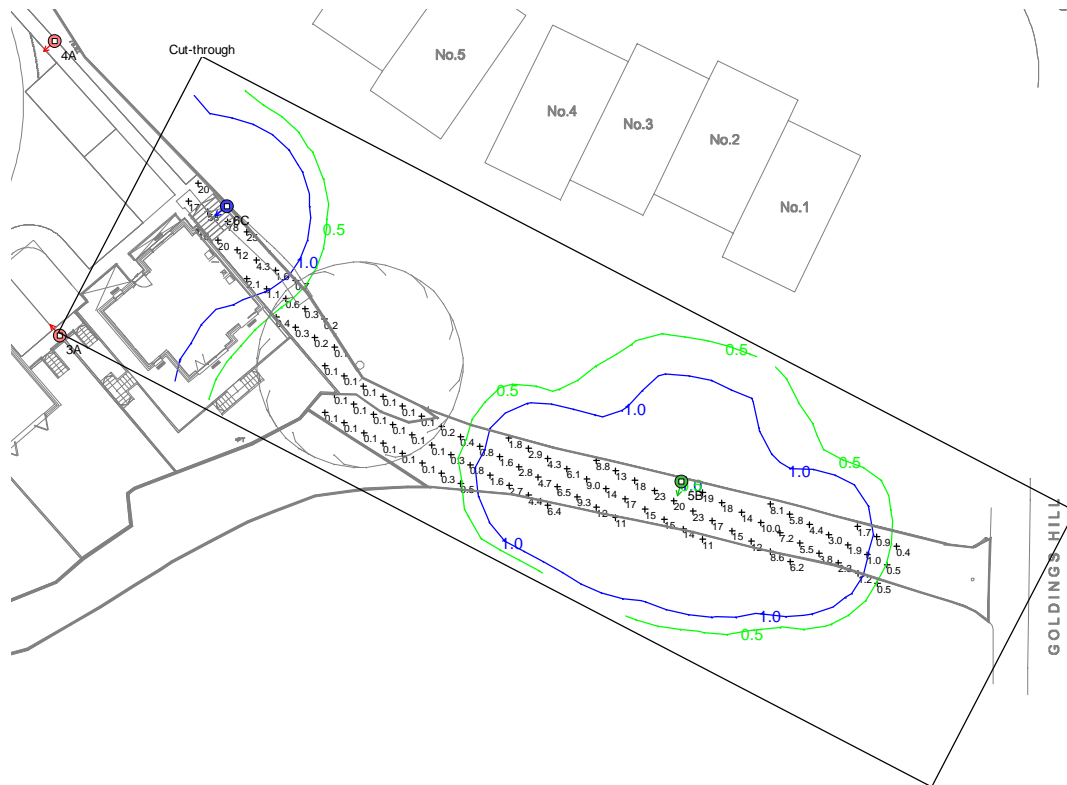


Results

Eav	6.67
Emin	1.15
E _{max}	15.32
E _{min} /E _{max}	0.07
E _{min} /E _{av}	0.17

Horizontal Illuminance (lux)

Cut-through



Results

Eav	7.23
Emin	0.05
Emax	77.61
Emin/Emax	0.00
Emin/Eav	0.01

Illuminance (lux)

Vertical Grid 1

0.0	0.0	0.0	0.0	0.0	0.0	0.0	0.0	0.0	0.0	0.0	0.0	0.0	0.0	0.0	0.0	0.0	0.0	0.0	0.0	0.0	0.0
0.8	0.6	0.5	0.5	0.5	0.5	0.5	0.4	0.4	0.4	0.3	0.3	0.2	0.2	0.1	0.1	0.1	0.1	0.0	0.0	0.0	0.0
1.0	0.8	0.8	0.8	0.8	0.8	0.7	0.7	0.7	0.6	0.5	0.4	0.4	0.3	0.3	0.2	0.2	0.2	0.2	0.2	0.1	0.1
1.8	1.4	1.1	0.9	0.9	0.9	0.9	1.0	0.9	0.7	0.6	0.5	0.4	0.4	0.4	0.3	0.3	0.3	0.3	0.3	0.2	0.2

Results

Eav	0.35
Emin	0.00
E _{max}	1.76
Emin/E _{max}	0.00
Emin/Eav	0.00

Illuminance (lux)

Vertical Grid 2

0.0	0.0	0.0	0.0	0.0	0.0	0.0	0.0	0.0	0.0	0.0	0.0	0.0	0.0	0.0	0.0
0.0	0.0	0.0	0.0	0.0	0.0	0.0	0.0	0.0	0.0	0.0	0.0	0.0	0.0	0.0	0.0
0.0	0.0	0.0	0.0	0.0	0.0	0.0	0.0	0.0	0.0	0.0	0.0	0.0	0.0	0.0	0.0
0.0	0.0	0.0	0.0	0.0	0.0	0.0	0.0	0.0	0.0	0.0	0.0	0.0	0.0	0.0	0.0

Results

Eav	0.00
Emin	0.00
Emax	0.01
Emin/Emax	0.00
Emin/Eav	0.00

GUIDANCE NOTES FOR THE REDUCTION OF OBTRUSIVE LIGHT

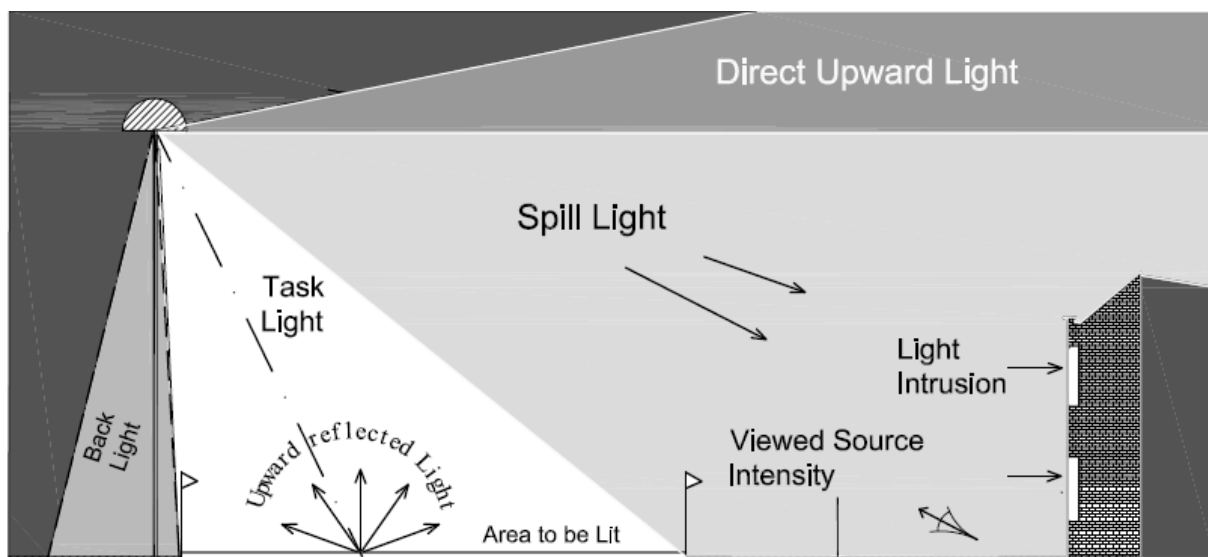
“Think before you light - The right amount of light, where wanted, when wanted.”

Man's invention of artificial light has done much to safeguard and enhance our night-time environment but, if not properly controlled, **obtrusive light** (sometimes referred to as light pollution) can present serious physiological and ecological problems.

Obtrusive Light, whether it keeps you awake through a bedroom window or impedes your view of the night sky, is a form of pollution, which may also be a nuisance in law and which can be substantially reduced without detriment to the lighting task.

Sky glow, the brightening of the night sky, **Glare** the uncomfortable brightness of a light source when viewed against a darker background, and **Light Intrusion (“Trespass”)**, the spilling of light beyond the boundary of the property or area being lit, are all forms of obtrusive light which may cause nuisance to others and waste money and energy. Think before you light. Is it necessary? What effect will it have on others? Will it cause a nuisance? How can you minimise the problem?

Figure 1 – Types of obtrusive light



Do not "over" light. This is a major cause of obtrusive light and is a waste of energy. There are published standards for most lighting tasks, adherence to which will help minimise upward reflected light. Organisations from which full details of these standards can be obtained are given on the last page of this leaflet.

Dim or switch off lights when the task is finished. Generally a lower level of lighting will suffice to enhance the night time scene than that required for safety and security.

“Good Design equals Good Lighting”

Any lighting scheme will consist of three basic elements: a light source, a luminaire and a method of installation.

Light sources (Lamps)

Remember that the light source output in LUMENS is not the same as the wattage and that it is the former that is important in combating the problems of obtrusive light.

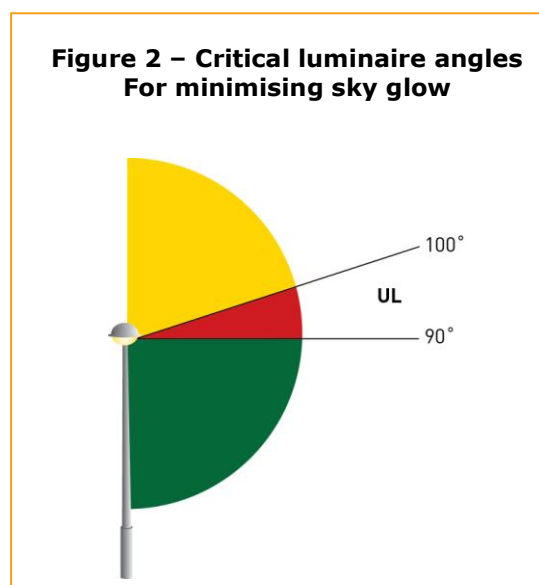
Most nighttime visual tasks are only dependant on light radiated within the visual spectrum. It is therefore NOT necessary for light sources to emit either ultra-violet or infra-red radiation unless specifically designed to do so. It is also understood that light from the shorter wavelengths of the spectrum has important effects on both flora and fauna that should be considered.

Research indicates that light from the blue end of the spectrum has important non-visual effects on the health of the human body, in particular in our sleep/wake patterns. It is therefore important to appreciate that while in obtrusive light terms the use of blue light should be minimised, there are many night-time tasks such as driving and sports where to be fully awake is an important aid to safety.

Luminaires

Care should always be taken when selecting luminaires to ensure that appropriate products are chosen and that their location will reduce spill light and glare to a minimum.

Use specifically designed lighting equipment that minimises the upward spread of light near to and above the horizontal. The most sensitive/critical zones for minimising sky glow are those between 90° and 100° as shown in Figure 2 and referred to as the lower, upward light output zone (UL).



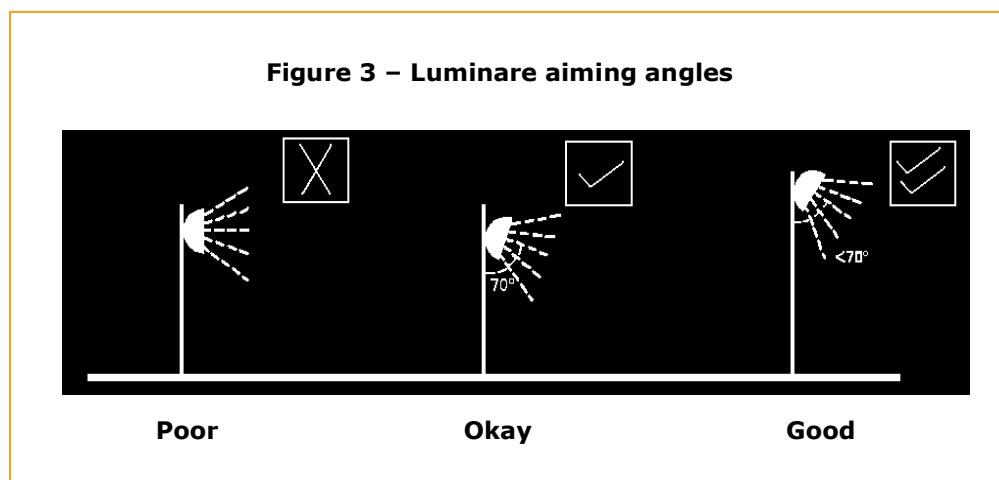
For most sports and area lighting installations the use of luminaires with double-asymmetric beams designed so that the front glazing is kept at or near parallel to the surface being lit should, if correctly aimed, ensures minimum obtrusive light.

Appendices 1 and 2 to these notes gives more details of how to choose and if necessary modify luminaires.

Installation

In most cases it will be beneficial to use as high a mounting height as possible, giving due regard to the daytime appearance of the installation. The requirements to control glare for the safety of road users are given in Table 3.

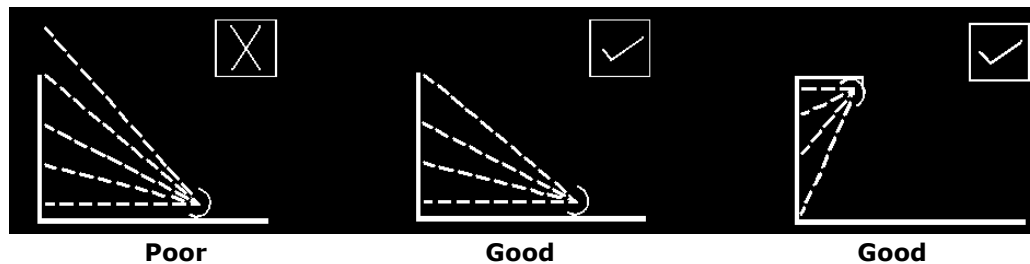
Keep glare to a minimum by ensuring that the main beam angle of all lights directed towards any potential observer is not more than 70°. Higher mounting heights allow lower main beam angles, which can assist in reducing glare. In areas with low ambient lighting levels, glare can be very obtrusive and extra care should be taken when positioning and aiming lighting equipment. With regard to domestic security lighting the ILP produces an information leaflet GN02:2009 that is freely available from its website.



When lighting vertical structures such as advertising signs, direct light downwards wherever possible. If there is no alternative to up-lighting, as with much decorative lighting of buildings, then the use of shields, baffles and louvres will help reduce spill light around and over the structure to a minimum.

For road and amenity lighting installations, (see also design standards listed on Page 5) light near to and above the horizontal should normally be minimised to reduce glare and sky glow (Note ULR's in Table 2). In rural areas the use of full horizontal cut off luminaires installed at 0° uplift will, in addition to reducing sky glow, also help to minimise visual intrusion within the open landscape. However in some urban locations, luminaires fitted with a more decorative bowl and good optical control of light should be acceptable and may be more appropriate.

Figure 4 – Façade Illumination



Since 2006 “Artificial Light” has been added to the list of possible Statutory Nuisances in England, Wales and Scotland. The monitoring of such nuisances will be the responsibility of Environmental Health Officers (EHOs) for which separate guidance is being produced.

With regard to the planning aspect, many Local Planning Authorities (LPAs) have already produced, or are producing, policies that within the planning system will become part of their local development framework. For new developments there is an opportunity for LPAs to impose planning conditions related to external lighting, including curfew hours.

The Scottish Executive has published a design methodology document (March 2007) entitled [“Controlling Light Pollution and Reducing Energy Consumption”](#) to further assist in mitigating obtrusive light elements at the design stage.

ENVIRONMENTAL ZONES

It is recommended that Local Planning Authorities specify the following environmental zones for exterior lighting control within their Development Plans.

Table 1 – Environmental Zones

Zone	Surrounding	Lighting Environment	Examples
E0	Protected	Dark	UNESCO Starlight Reserves, IDA Dark Sky Parks
E1	Natural	Intrinsically dark	National Parks, Areas of Outstanding Natural Beauty etc
E2	Rural	Low district brightness	Village or relatively dark outer suburban locations
E3	Suburban	Medium district brightness	Small town centres or suburban locations
E4	Urban	High district brightness	Town/city centres with high levels of night-time activity

Where an area to be lit lies on the boundary of two zones the obtrusive light limitation values used should be those applicable to the most rigorous zone.

NB: Zone E0 must always be surrounded by an E1 Zone.

DESIGN GUIDANCE

The following limitations may be supplemented or replaced by a LPA's own planning guidance for exterior lighting installations. As lighting design is not as simple as it may seem, you are advised to consult and/or work with a professional lighting designer before installing any exterior lighting.

Table 2 – Obtrusive Light Limitations for Exterior Lighting Installations – General Observers

Environment al Zone	Sky Glow ULR [Max %] ⁽¹⁾	Light Intrusion (into Windows) E_v [lux] ⁽²⁾		Luminaire Intensity I [candelas] ⁽³⁾		Building Luminance Pre-curfew ⁽⁴⁾
		Pre- curfew	Post- curfew	Pre- curfew	Post- curfew	Average, L [cd/m ²]
E0	0	0	0	0	0	0
E1	0	2	0 (1*)	2,500	0	0
E2	2.5	5	1	7,500	500	5
E3	5.0	10	2	10,000	1,000	10
E4	15	25	5	25,000	2,500	25

ULR = **Upward Light Ratio of the Installation** is the maximum permitted percentage of luminaire flux that goes directly into the sky.

E_v = **Vertical Illuminance in Lux** - measured flat on the glazing at the centre of the window.

I = **Light Intensity in Candelas (cd)**

L = **Luminance in Candelas per Square Metre (cd/m²)**

Curfew = **the time after which stricter requirements (for the control of obtrusive light) will apply**; often a condition of use of lighting applied by the local planning authority. If not otherwise stated - 23.00hrs is suggested.

***** = **Permitted only from** Public road lighting installations

(1) Upward Light Ratio – Some lighting schemes will require the deliberate and careful use of upward light, e.g. ground recessed luminaires, ground mounted floodlights, festive lighting, to which these limits cannot apply. However, care should always be taken to minimise any upward waste light by the proper application of suitably directional luminaires and light controlling attachments.

- (2) Light Intrusion (into Windows)** – These values are suggested maxima and need to take account of existing light intrusion at the point of measurement. In the case of road lighting on public highways where building facades are adjacent to the lit highway, these levels may not be obtainable. In such cases where a specific complaint has been received, the Highway Authority should endeavour to reduce the light intrusion into the window down to the post curfew value by fitting a shield, replacing the luminaire, or by varying the lighting level.
- (3) Luminaire Intensity** – This applies to each luminaire in the potentially obtrusive direction, outside of the area being lit. The figures given are for general guidance only and for some sports lighting applications with limited mounting heights, may be difficult to achieve.
- (4) Building Luminance** – This should be limited to avoid over lighting, and related to the general district brightness. In this reference building luminance is applicable to buildings directly illuminated as a night-time feature as against the illumination of a building caused by spill light from adjacent luminaires or luminaires fixed to the building but used to light an adjacent area.

Table 3 – Obtrusive Light Limitations for Exterior Lighting Installations – Road Users		
Road Classification ⁽¹⁾	Threshold Increment (TI)	Veiling Luminance (Lv)
No road lighting	15% based on adaptation luminance of 0.1cd/m ²	0.04
ME6/ ME5	15% based on adaptation luminance of 1cd/m ²	0.25
ME4/ ME3	15% based on adaptation luminance of 2cd/m	0.40
ME2 / ME1	15% based on adaptation luminance of 5cd/m ²	0.84

TI = **Threshold Increment** is a measure of the loss of visibility caused by the disability glare from the obtrusive light installation

Lv = **Veiling Luminance** is a measure of the adaptation luminance caused by the disability glare from the obtrusive light installation

(1) = **Road Classifications** as given in BS EN 13201 - 2: 2003 Road lighting Performance requirements. Limits apply where users of transport systems are subject to a reduction in the ability to see essential information. Values given are for relevant positions and for viewing directions in path of travel. For a more detailed description and methods for determining, calculating and measuring the above parameters see CIE Publication 150:2003.


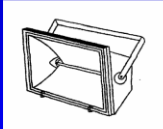
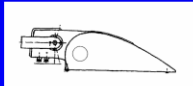
RELEVANT PUBLICATIONS AND STANDARDS:

British Standards: www.bsi.org.uk	BS 5489-1: 2003	Code of practice for the design of road lighting – Part 1: Lighting of roads and public amenity areas
	BS EN 13201-2:2003	Road lighting – Part 2: Performance requirements
	BS EN 13201-3:2003	Road lighting – Part 3: Calculation of performance
	BS EN 13201-4:2003	Road lighting – Part 4: Methods of measuring lighting performance.
	BS EN 12193: 1999	Light and lighting – Sports lighting
	BS EN 12464-2: 2007	Lighting of work places – Outdoor work places
Countryside Commission/ DOE	Lighting in the Countryside: Towards good practice (1997) (<i>Out of Print but available on www.communities.gov.uk/index.asp?id=1144823</i>)	
UK Government / Defra www.defra.gov.uk	Statutory Nuisance from Insects and Artificial Light – Guidance on Sections 101 to 103 of the Clean Neighbourhoods and Environment Act 2005	
	Road Lighting and the Environment (1993) (Out of Print)	
CIBSE/SLL Publications: www.cibse.org	CoL	Code for Lighting (2002)
	LG1	The Industrial Environment (1989)
	LG4	Sports (1990+Addendum 2000)
	LG6	The Exterior Environment (1992)
	FF7	Environmental Considerations for Exterior Lighting (2003)
CIE Publications: www.cie.co.at	01	Guidelines for minimizing Urban Sky Glow near Astronomical Observatories (1980)
	83	Guide for the lighting of sports events for colour television and film systems (1989)
	92	Guide for floodlighting (1992)
	115	Recommendations for the lighting of roads for motor and pedestrian traffic – Second Edition (2010)
	126	Guidelines for minimizing Sky glow (1997)
	129	Guide for lighting exterior work areas (1998)
	136	Guide to the lighting of urban areas (2000)
	150	Guide on the limitations of the effect of obtrusive light from outdoor lighting installations (2003)
	154	The Maintenance of outdoor lighting systems (2003)
ILP Publications: www.theilp.org.uk	TR 5	Brightness of Illuminated Advertisements (2001)
	TR24	A Practical Guide to the Development of a Public Lighting Policy for Local Authorities (1999)
	GN02	Domestic Security Lighting, Friend or Foe
ILP/CIBSE Joint Publications	Lighting the Environment - A guide to good urban lighting (1995)	
ILP/CSS Publications	Joint Code of Practice for the installation, maintenance and removal of seasonal decorations. (2005)	
ILP/CfDS Joint Publication www.dark-skies.org	Towards Understanding Sky glow. 2007	
IESNA www.iesna.org	TM-15-07 (R) Luminaire Classification System for Outdoor luminaires	

NB: These notes are intended as guidance only and the application of the values given in Tables 2 & 3 should be given due consideration along with all other factors in the lighting design. Lighting is a complex subject with both objective and subjective criteria to be considered. The notes are therefore no substitute for professionally assessed and designed lighting, where the various and maybe conflicting visual requirements need to be balanced.

APPENDIX 1 - PROPOSED OUTDOOR LUMINAIRE CLASSIFICATION SYSTEM

Variable Aim Luminaires – General Classifications:

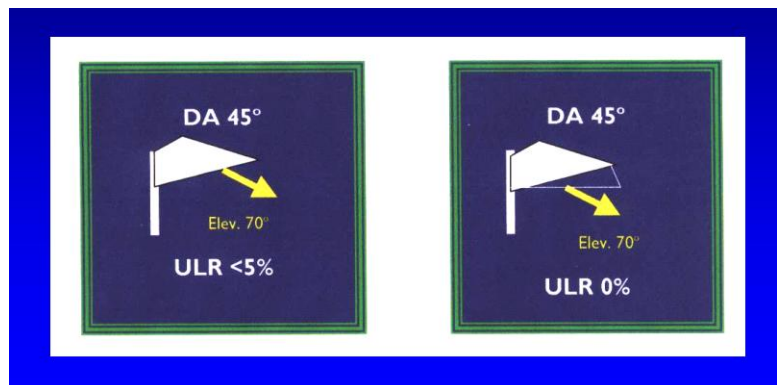
➤ Type A	Symmetrical	
➤ Type B	Asymmetrical	
➤ Type C	Double-Asymmetrical	

Proposed labelling System:

Fixed Position luminaires



Variable Aim Luminaires
(Shown here for a 45° Double-Asymmetric luminaire aimed at 70° – with and without a cowl).

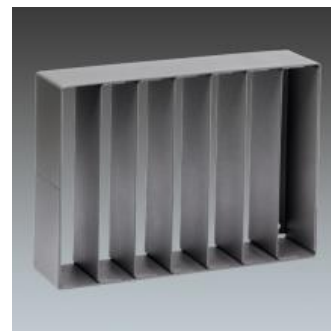


APPENDIX 2 - ILLUSTRATIONS OF LUMINAIRE ACCESSORIES FOR LIMITING OBTRUSIVE LIGHT (images provided by Philips and Thorn)

Cowl (or Hood)



External Louvre



SHIELD



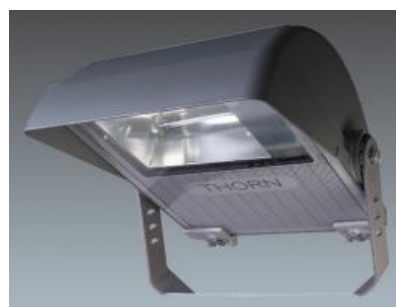
SHEILD "Barn Doors"



Double Asymmetric Luminaire



Simple Hood



Circular Louvre



Cowl & Louvre



Internal Louvre (horizontal)



Internal Louvre (vertical)

